



NSW Clubs

Industry Insights and Trends

March 2017

The contents of this document are primarily based on the NSW Clubs State Gaming Rankings data up to and including the quarter ended **30 November 2016**. A Creative Commons Attributions licence applies to Liquor & Gaming NSW data. © State of NSW (Department of Justice) 2016. Data for QLD is obtained under a Creative Commons Licence © The State of Queensland 2016. Data for VIC is obtained under a Creative Commons Licence © The State of Victoria.

Contents

1. Introduction	4
2. Executive Summary	4
3. High-level Industry Insights	5
3.1 Quarterly Total NSW Turnover and Net Hold Trends	5
3.2 Total NSW Turnover and Net Hold (\$) Quarterly Changes	5
3.3 Total NSW Turnover and Net Hold (\$) Quarterly Changes to Prior Year	6
3.4 Annual Total NSW Turnover and Net Hold (\$) Change to the Prior Year	6
3.5 Annual Total NSW Turnover, Net Hold (\$) and Net Hold (%) Trends	7
3.6 Quarterly Net Hold Per Machine and Number of Machines Trend	7
3.7 Number of LGAs with Growing and Declining Net (Annual 2016 vs 2015)	8
3.8 Number of LGAs with Growing and Declining Net (Nov16 vs Nov15 Qtr)	8
3.9 High-Growth LGAs (Annual Net Growth 2016 vs 2015)	9
3.10 Declining LGAs (Annual Net Decline 2016 vs 2015)	10
3.11 Comparison of Key Gaming Metrics of NSW, QLD and VIC Clubs	11
3.12 Comparison of Longer-term Net Per Machine Per Day Metrics of NSW, QLD and VIC Clubs	11
3.13 Comparison of Current Quarter Clubs and Hotels Net Per Machine Per Day Metrics for NSW, QLD and VIC	12
4.1 November 2016 NSW Club Ranking Insights – Net Hold Per GM Rankings (November Qtr 2016 vs November Qtr 2015)	13
4.1(a) Largest PGM Net Ranking Improvements – Clubs with More than 100 GMs	13
4.1(b) Largest PGM Net Ranking Improvements – Clubs with 50 to 100 GMs	14
4.1(c) Largest PGM Net Ranking Declines – Clubs with More than 100 GMs	15
4.1(d) Largest PGM Net Ranking Declines – Clubs with 50 to 100 GMs	16
4.2. November 2016 NSW Club Ranking Insights – Net Hold Rankings (November Qtr 2016 vs November Qtr 2015)	17
4.2(a) Largest Net Ranking Improvements – Clubs with More than 100 GMs	17
4.2(b) Largest Net Ranking Improvements – Clubs with 50 to 100 GMs	18
4.2(c) Largest Net Ranking Declines – Clubs with More than 100 GMs	19
4.2(d) Largest Net Ranking Declines – Clubs with 50 to 100 GMs	20
5.1 November 2016 NSW Club Ranking Insights – Annual Average Net Hold Per GM Rankings (2016 vs 2015)	21
5.1(a) Largest Annual Average PGM Net Ranking Improvements – Clubs with More than 100 GMs	21
5.1(b) Largest Annual Average PGM Net Ranking Improvements – Clubs with 50 to 100 GMs	22
5.1(c) Largest Annual Average PGM Net Ranking Declines – Clubs with More than 100 GMs	23
5.1(d) Largest Annual Average PGM Net Ranking Declines – Clubs with 50 to 100 GMs	24

5.2. November 2016 NSW Club Ranking Insights – Annual Average Net Hold Rankings (2016 vs 2015)	25
5.2(a) Largest Annual Average Net Ranking Improvements – Clubs with More than 100 GMs	25
5.2(b) Largest Annual Average Net Ranking Improvements – Clubs with 50 to 100 GMs	26
5.2(c) Largest Annual Average Net Ranking Declines – Clubs with More than 100 GMs	27
5.2(d) Largest Annual Average Net Ranking Declines – Clubs with 50 to 100 GMs	28
6.1 November 2016 NSW Club Ranking Insights – Net Hold Per GM Rankings (November 2016 vs August 2016)	29
6.1(a) Largest Current Quarter PGM Net Ranking Improvements – Clubs with More than 100 GMs	29
6.1(b) Largest Current Quarter PGM Net Ranking Improvements – Clubs with 50 to 100 GMs	30
6.1(c) Largest Current Quarter PGM Net Ranking Declines – Clubs with More than 100 GMs	31
6.1(d) Largest Current Quarter PGM Net Ranking Declines – Clubs with 50 to 100 GMs	32
6.2. November 2016 NSW Club Ranking Insights – Net Rankings (November 2016 vs August 2016)	33
6.2(a) Largest Current Quarter Net Ranking Improvements – Clubs with More than 100 GMs	33
6.2(b) Largest Current Quarter Net Ranking Improvements – Clubs with 50 to 100 GMs	34
6.2(c) Largest Current Quarter Net Ranking Declines – Clubs with More than 100 GMs	35
6.2(d) Largest Current Quarter Net Ranking Declines – Clubs with 50 to 100 GMs	36
7. November 2016 Quarter - Club Machine Movements	37
7.1 November 2016 Quarter Largest Machine Number Increases	37
7.2 November 2016 Quarter Largest Machine Number Reductions	37
8. Important Information for Report Users	38

1. Introduction

The following report provides a range of insights in regard to the NSW Clubs Industry based on the NSW State Gaming data (and similar data from VIC and QLD). The purpose is to provide PKF clients and potential clients in the industry with information relevant to the conduct of their Clubs for the benefit of their communities.

2. Executive Summary

NSW State-Level Insights

- 2016 Annual growth in total NSW club turnover was 3.3% and net hold was 2.7%.
- Quarterly growth relative to the same quarter in the prior year continues to soften with the November 2016 quarter only observed to be 1% higher than November 2015 quarter (August 2%, May 4% and February 7%). This trend may reflect the ongoing structural, demographic and technological changes which are impacting the industry.
- Growth in Net Hold (\$) continues to lag the growth in turnover due to the impact of higher RTP(%) and the increasing penetration of MTGMs and Links.
- Machine numbers continue in long-term decline across NSW, however increased by 137 in November 2016 compared to August 2016. The Per Machine Net Hold continues to grow, subject to the observed quarterly seasonality.
- On an annual basis 71% of all LGAs recorded growth in Net compared to the prior year.
- For the November 2016 quarter, only 52% of all LGAs recorded growth in Net compared to the November 2015 quarter.
- The Average Net Per Machine Per Day for the November 2016 quarter for the Top 25 Clubs was \$272 and the overall NSW Average was \$156.

State-Level Comparisons between NSW, VIC and QLD

- VIC has the smallest number of venues and machines and therefore the lowest total net value, however it holds a significant premium in net per machine per day.
- NSW and VIC continue to grow, whilst QLD has recorded almost no growth in total net in 2016.
- Total machine numbers have been contracting in both NSW and QLD, whilst growing very slightly in VIC.
- The number of gaming venues has been contracting in all three states.
- NSW has recorded consistent growth in net per machine per day over the last 10 years, whilst VIC has fluctuated, but remains the same in 2016 as it was in 2009. QLD has grown incrementally over the shorter period of available data.
- Hotels are yielding significantly more per machine per day than Clubs in all three states.
- There are more Hotels than Clubs in every state, however Clubs in NSW (particularly) and QLD hold the majority of machines. Hotels dominate in VIC on all measures and yield a significantly larger amount per machine per day than any other.

Club Ranking Movements

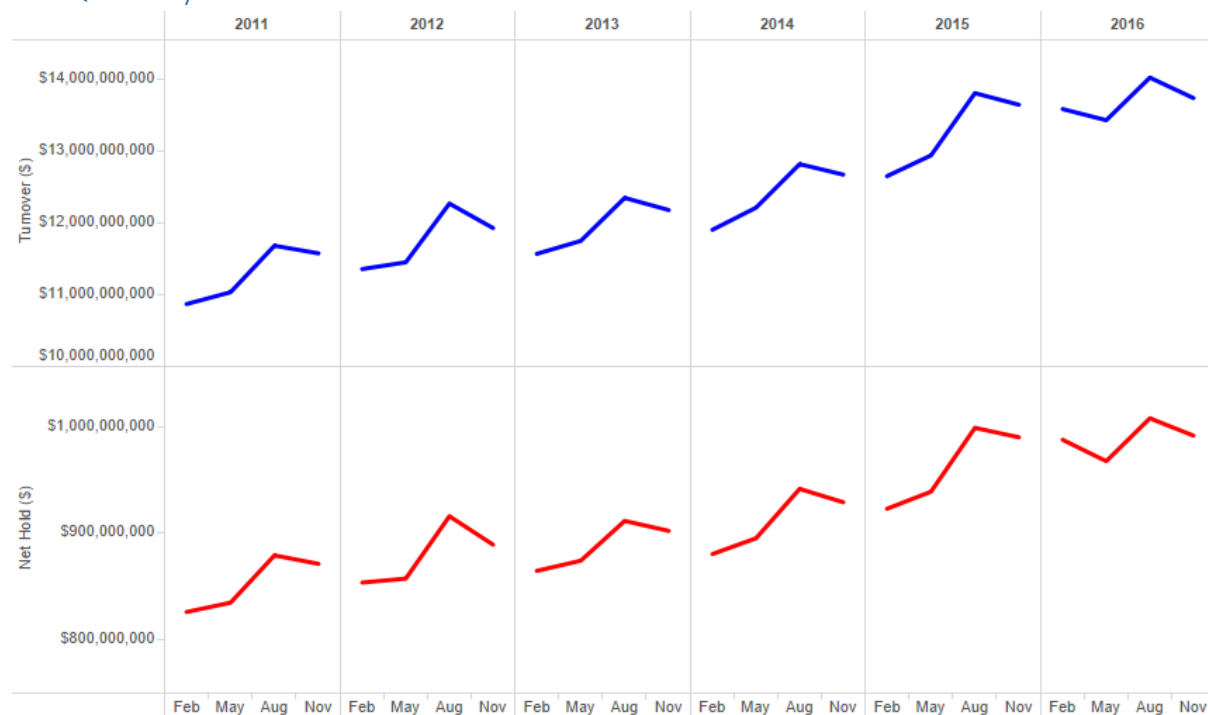
- Refer to sections 4.1, 4.2, 5.1, 5.2, 6.1 and 6.2 for the largest increases and decreases in key rankings for the quarter and the annual average for the year to November.

Club Machine Movements

- Refer to section 7 for the largest individual increases and decreases in machine numbers for the quarter.

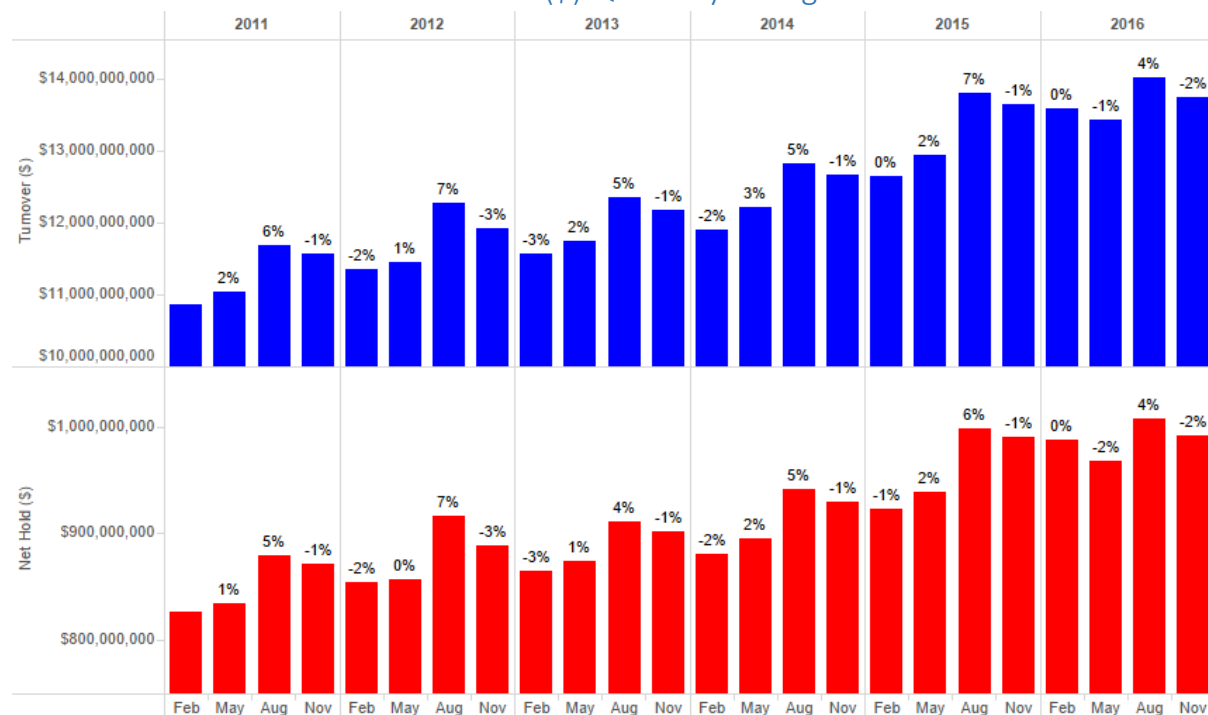
3. High-level Industry Insights

3.1 Quarterly Total NSW Turnover and Net Hold Trends

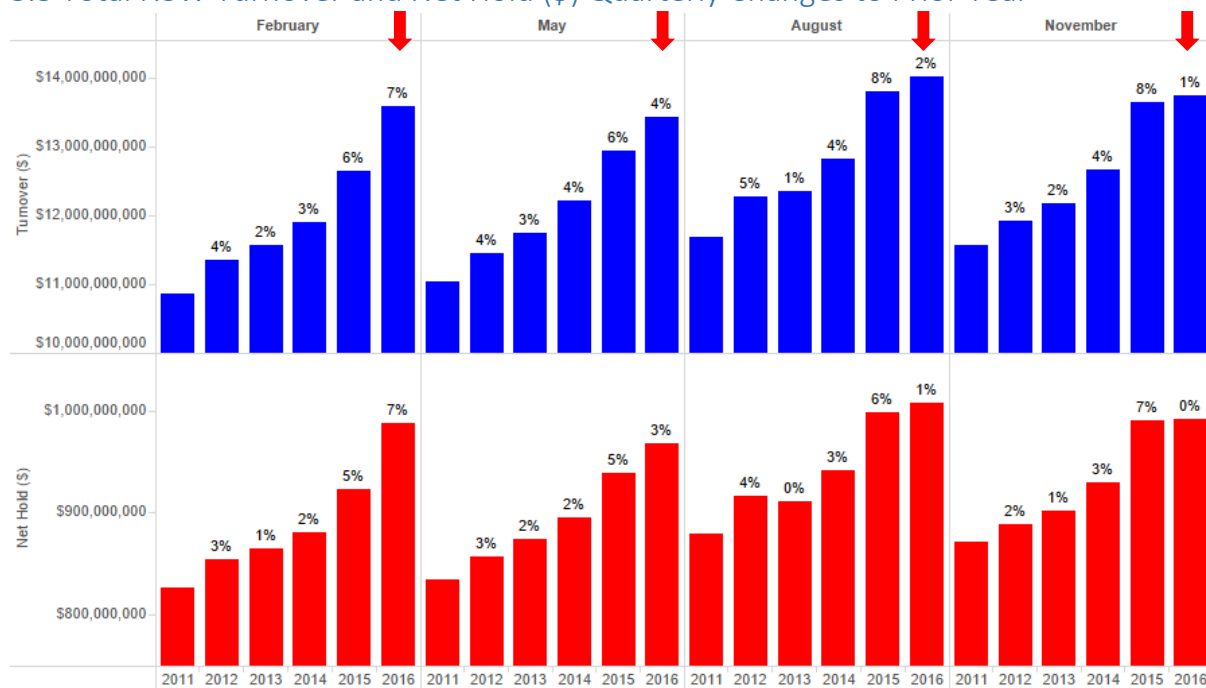


- The observed quarterly seasonality has returned to the historical pattern, after the unusual fall in the May 2016 quarter.

3.2 Total NSW Turnover and Net Hold (\$) Quarterly Changes

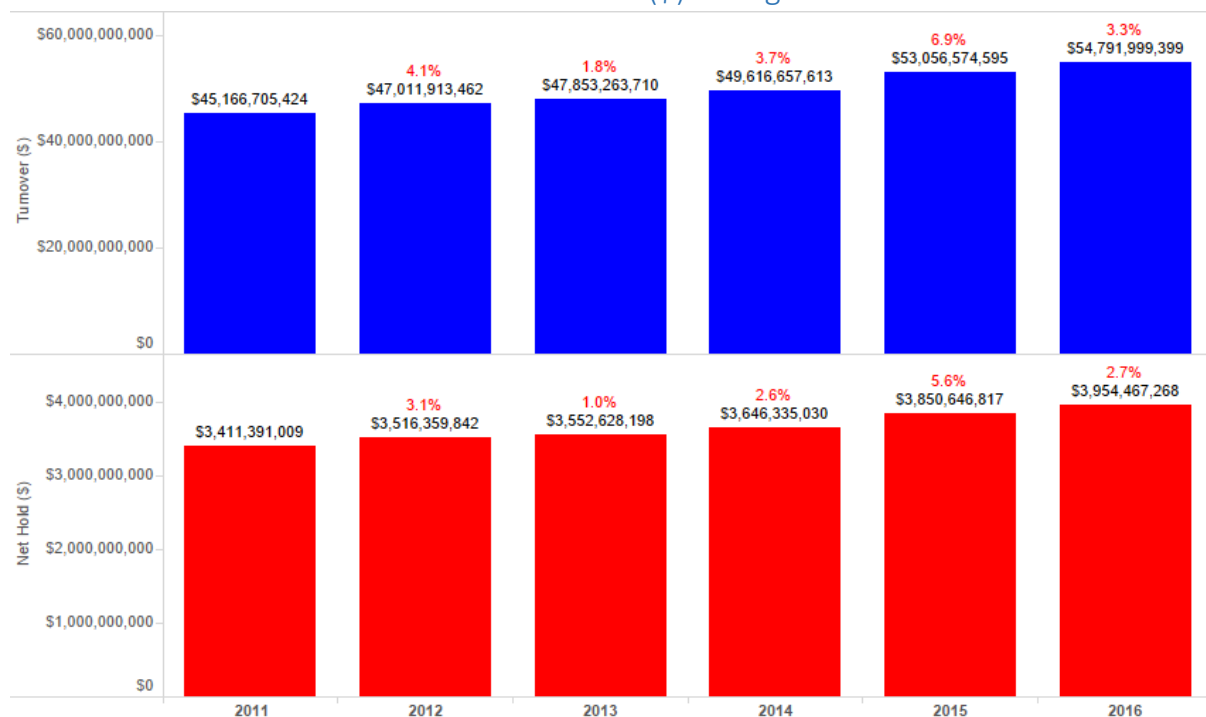


3.3 Total NSW Turnover and Net Hold (\$) Quarterly Changes to Prior Year



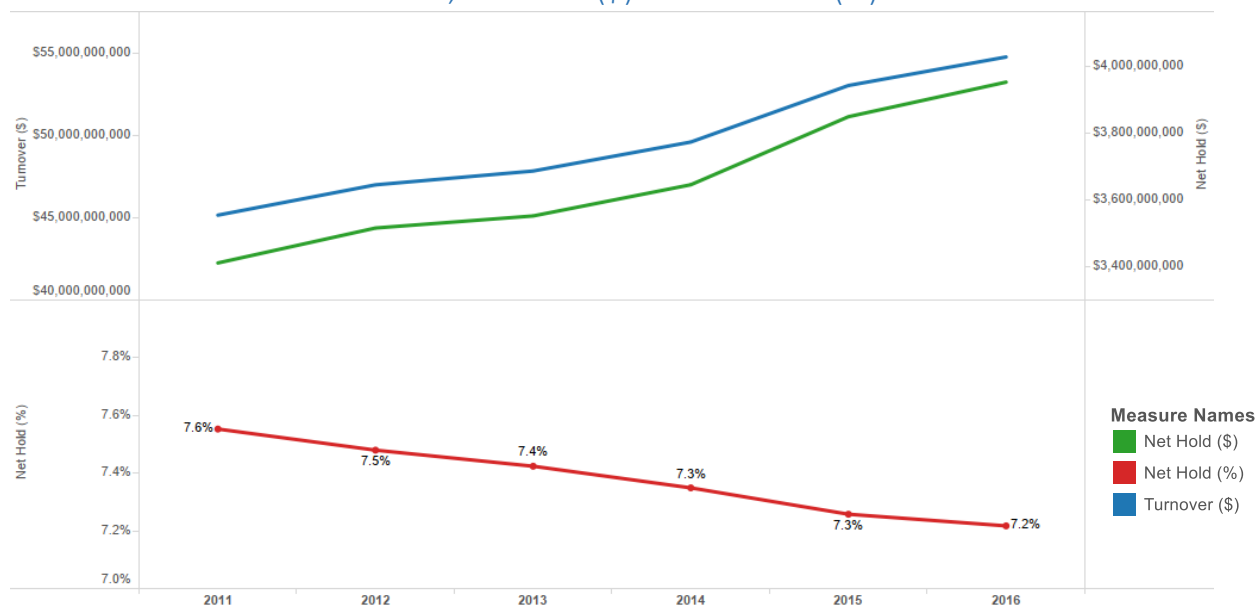
- Quarterly growth relative to the same quarter in the prior year continues to soften with the November 2016 quarter Turnover only observed to be 1% higher than November 2015 quarter, and the Net less than 1% higher.

3.4 Annual Total NSW Turnover and Net Hold (\$) Change to the Prior Year

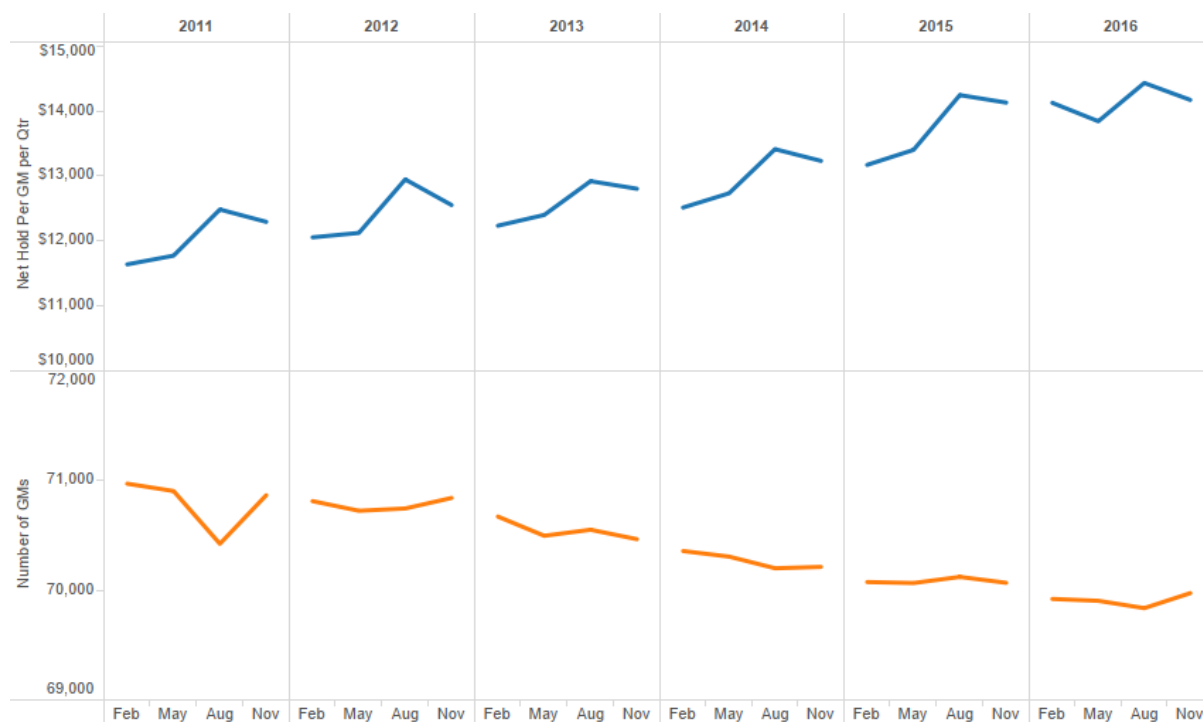


- Growth in Net Hold (\$) continues to lag the growth in turnover due to the impact of higher RTP(%) and the increasing penetration of MTGMs and Links.

3.5 Annual Total NSW Turnover, Net Hold (\$) and Net Hold (%) Trends

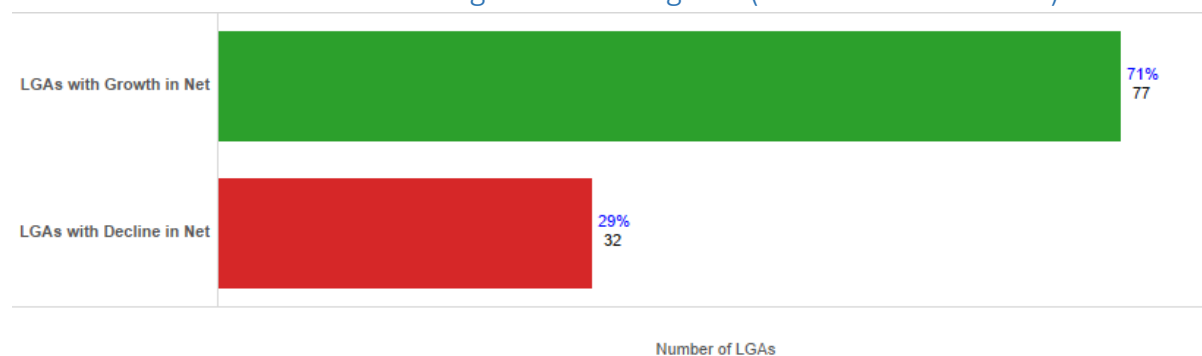


3.6 Quarterly Net Hold Per Machine and Number of Machines Trend



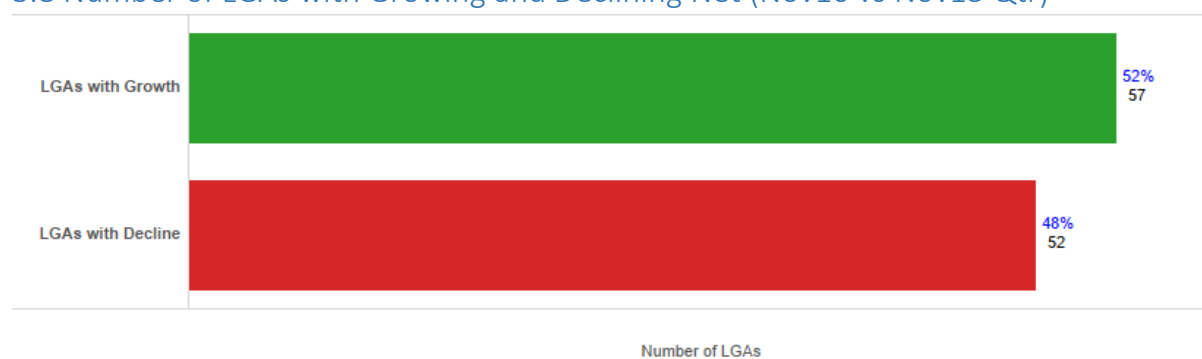
- Machine numbers grew by 137 during the November 2016 quarter, against the longer-term declining trend.
- Per Machine Net Hold continues to grow on an annual basis, but declined in the November 2016 quarter due to the higher number of machines and the seasonally lower net compared to the August 2016 quarter.

3.7 Number of LGAs with Growing and Declining Net (Annual 2016 vs 2015)



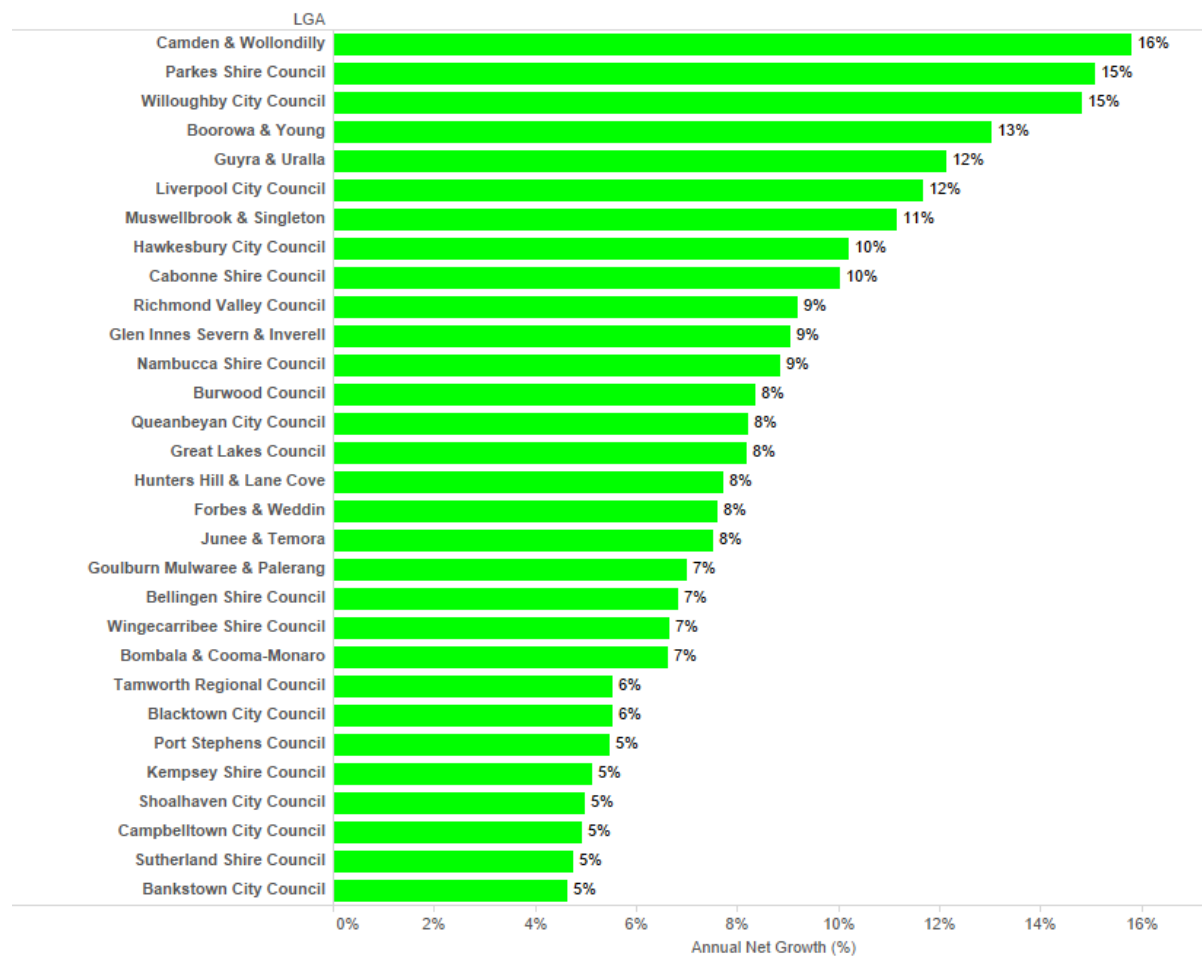
- 71% of LGAs recorded growth in Net for 2016 vs 2015.

3.8 Number of LGAs with Growing and Declining Net (Nov16 vs Nov15 Qtr)

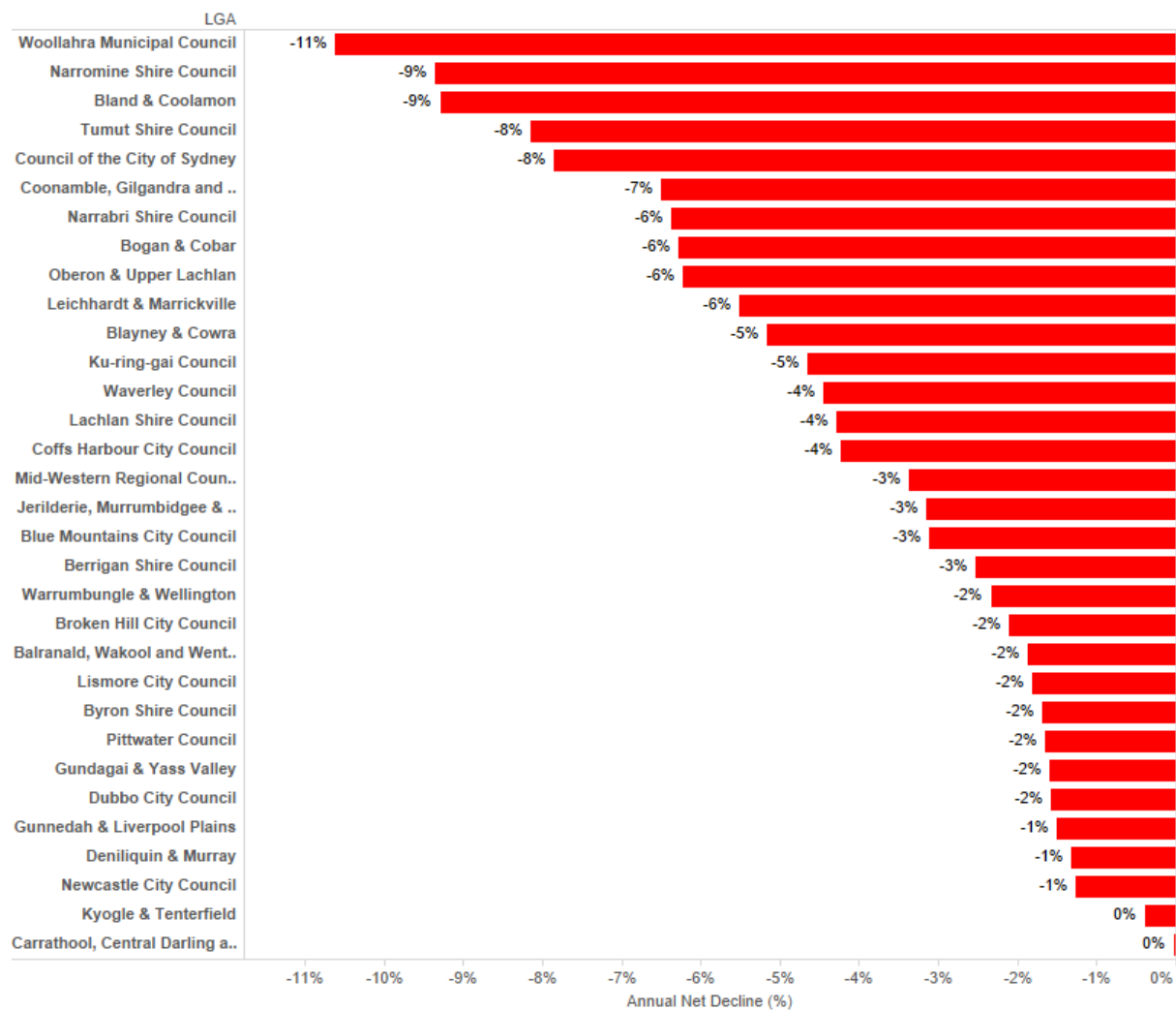


- 52% of LGAs recorded growth in Net for the November 2016 quarter compared to the November 2015 quarter.

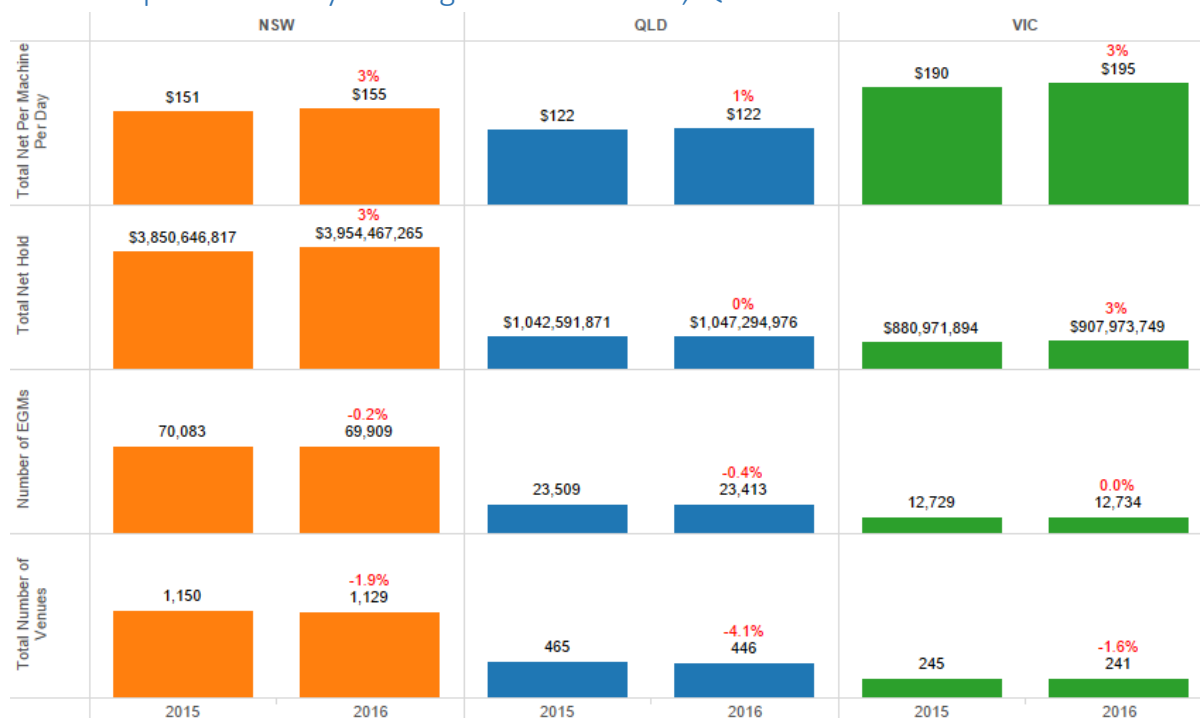
3.9 High-Growth LGAs (Annual Net Growth 2016 vs 2015)



3.10 Declining LGAs (Annual Net Decline 2016 vs 2015)

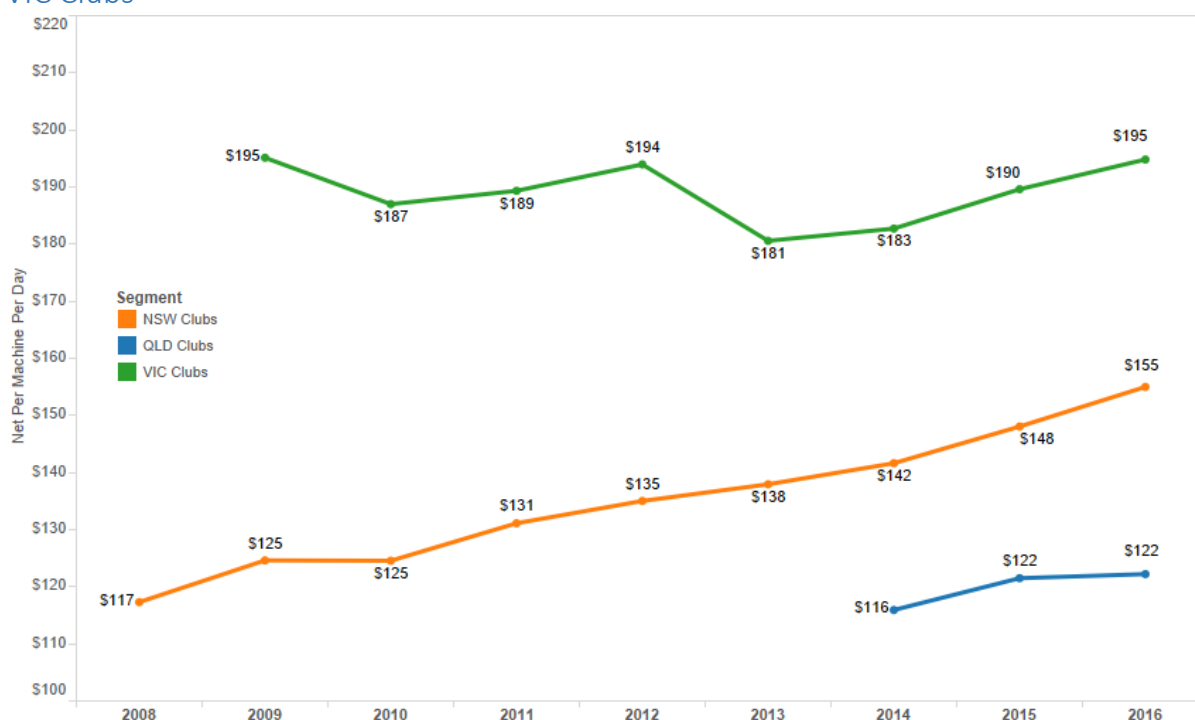


3.11 Comparison of Key Gaming Metrics of NSW, QLD and VIC Clubs



- VIC has the smallest number of venues and machines and therefore the lowest total net value, however it holds a significant premium in net per machine per day.
- NSW and VIC continue to grow, whilst QLD has recorded almost no growth.
- Total machine numbers have been contracting in both NSW and QLD, whilst growing very slightly in VIC
- The number of venues has been contracting in all three states.

3.12 Comparison of Longer-term Net Per Machine Per Day Metrics of NSW, QLD and VIC Clubs



- NSW has recorded consistent growth in net per machine per day over the last 10 years, whilst VIC has fluctuated, but remains the same in 2016 as it was in 2009. QLD has grown incrementally over the shorter period of available data.

3.13 Comparison of Current Quarter Clubs and Hotels Net Per Machine Per Day Metrics for NSW, QLD and VIC



- Hotels are yielding significantly more per machine per day than Clubs in all three states.
- There are more Hotels than Clubs in every state, however Clubs in NSW (particularly) and QLD hold the majority of machines.
- Hotels dominate in VIC on all measures and yield a significantly larger amount per machine per day than any other.

4.1 November 2016 NSW Club Ranking Insights – Net Hold Per GM Rankings (November Qtr 2016 vs November Qtr 2015)

The Net Hold Per GM Rankings are a key measure of a Club's effectiveness, irrespective of its total number of machines. **Note** - Large changes are often attributable to significant structural changes in club activities (eg renovations, amalgamations, gaming floor changes etc).

4.1(a) Largest PGM Net Ranking Improvements – Clubs with More than 100 GMs

P.. Name	Nov16 PGM Net Ranking	Nov15 PGM Net Ranking	Change in PGM Ranking Nov16 vs Nov15	Chnagne in Number of Gaming Machines	Nov16 Gaming Machines
2.. Harbord Diggers - Mounties Group	209	364	(155)	(95)	115
2.. Campbelltown RSL Club Limited	276	387	(111)	(37)	208
2.. Pittwater RSL Club Ltd	78	183	(105)	(82)	193
2.. Illawarra District Rugby League Fo..	107	190	(83)	0	102
2.. Port Macquarie City Bowling Club ..	179	255	(76)	0	141
2.. St Marys R.S.L. & Ex Servicemans ..	478	546	(68)	(20)	130
2.. Bateau Bay Bowling Club	381	445	(64)	(1)	126
2.. Riverina Australian Football Club ..	256	319	(63)	0	162
2.. Club Condell Park	235	297	(62)	0	182
2.. Berkeley Sports Club	155	217	(62)	0	131
2.. Wests City	304	365	(61)	0	135
2.. Ashfield RSL Sub-Branch Club Li..	208	264	(56)	0	104
2.. Building Workers Club Limited	261	316	(55)	(5)	138
2.. Belmont 16 Foot Sailing Club	197	250	(53)	(21)	271
2.. Albury Soldiers Sailors & Airmens..	127	178	(51)	(14)	318
2.. Baulkham Hills Sports Club	370	419	(49)	0	144
2.. Catalina Country Club	244	287	(43)	0	132
2.. City Of Parramatta RSL Club	219	260	(41)	0	129
2.. Griffith Ex-Servicemen's Club Limi..	108	147	(39)	0	156
2.. Corowa RSL Club Limited	301	339	(38)	(7)	205
2.. Fraternity Bowling & Recreation C..	142	180	(38)	2	131
2.. Hornsby R S L Club Ltd	124	161	(37)	8	383
2.. Coomealla Memorial Sporting Clu..	170	207	(37)	0	174
2.. Barooga Sports Club Ltd	161	197	(36)	(5)	174
2.. Club Mulwala	237	273	(36)	0	199
2.. Tomakin Sports & Social Club Lim..	413	448	(35)	0	107
2.. Ingleburn RSL Sub-Branch Club Li..	92	126	(34)	(4)	247
2.. Merimbula-Imlay Bowling Club Li..	135	164	(29)	(3)	121
2.. Deniliquin RSL Club Ltd	308	336	(28)	3	110
2.. Gosford RSL Club	74	100	(26)	0	180
2.. Mulwala Water Ski Club Ltd	129	152	(23)	0	149
2.. Casino Returned Servicemens Me..	159	181	(22)	0	103
2.. Maitland City Bowls, Sports & Rec..	103	124	(21)	0	140
2.. Richmond Club Ltd	90	111	(21)	(10)	141
2.. WINDSOR RSL CLUB LTD	80	101	(21)	16	154
2.. Rooty Hill RSL Club Limited	29	48	(19)	0	726
2.. Queanbeyan Leagues Club Limited	60	79	(19)	0	373
2.. Birrong Bowling & Sports Club Ltd	249	267	(18)	0	127
2.. Tweed Heads Bowls Club Ltd	148	166	(18)	0	250
2.. Woonona Bulli RSL Memorial Club..	152	170	(18)	0	110
2.. Campbelltown Catholic Club Ltd	37	54	(17)	0	490
2.. Echuca - Moama RSL & Citizens C..	66	83	(17)	0	139
2.. Shoalhaven Ex-Servicemen's Club..	109	125	(16)	0	105
2.. Beresfield Bowling Club Limited	230	245	(15)	0	125
2.. Seagulls Club	121	135	(14)	0	221
2.. Bankstown RSL Club Ltd	137	150	(13)	(16)	155
2.. City of Blacktown RSL Club Ltd	162	175	(13)	2	208
2.. Workers Blacktown	30	43	(13)	(20)	430
2.. Broken Hill Musicians Club Ltd	416	428	(12)	0	101
2.. Toronto District Workers Club Lim..	131	143	(12)	5	158
2.. West Nelson Bay	115	127	(12)	2	180

4.1(b) Largest PGM Net Ranking Improvements – Clubs with 50 to 100 GMs

P.. Name	Nov16 PGM Net Ranking	Nov15 PGM Net Ranking	Change in PGM Ranking Nov16 vs Nov15	Change in Number of Gaming Machines	Nov16 Gaming Machines
2.. New Brighton Golf Club Limited	293	807	(514)	20	51
2.. Arncliffe Scots Sports & Social Cl..	253	507	(254)	0	50
2.. Camden Golf Club Ltd	228	404	(176)	0	57
2.. Sussex Inlet RSL Club Ltd	315	485	(170)	(21)	92
2.. Club Jervis Bay	375	524	(149)	0	86
2.. King Tom Club	686	824	(138)	0	63
2.. South Grafton District Ex-Servic..	220	350	(130)	0	59
2.. Woodburn Evans Head RSL Club ..	444	563	(119)	0	56
2.. Thurgoona Country Club Resort	172	278	(106)	0	51
2.. Club Old Bar	306	411	(105)	0	55
2.. DOOLEYS Regents Park Sports Cl..	450	547	(97)	28	64
2.. Nambucca Heads RSL Club	181	277	(96)	0	94
2.. Eden Fishermen's Recreation Club	390	475	(85)	0	61
2.. Coffs Harbour & District Ex-Servic..	349	434	(85)	(1)	64
2.. Queanbeyan Kangaroo Rugby Lea..	248	333	(85)	0	81
2.. Muswellbrook RSL Sub-branch Cl..	175	256	(81)	0	92
2.. Hexham Bowling Club Co-operativ..	392	470	(78)	0	91
2.. Kiama Golf Club	513	590	(77)	0	53
2.. Emu Plains Sporting & Recreation..	338	414	(76)	0	50
2.. Edgeworth Bowling Club Co-oper..	494	568	(74)	0	50
2.. Swansea RSL Club Ltd	169	237	(68)	0	91
2.. Euston Bowling & Recreation Clu..	98	165	(67)	0	100
2.. Urunga Bowling Club Limited	371	438	(67)	0	53
2.. Singleton Bowling Club Co-operat..	481	548	(67)	0	55
2.. Tamworth Services Club Limited	405	472	(67)	(3)	85
2.. Henry Lawson Club	302	369	(67)	0	52
2.. Parkes Service & Citizens Club Co..	171	233	(62)	0	73
2.. City Diggers Wollongong	291	349	(58)	(10)	92
2.. Budgewoi Soccer Club	164	222	(58)	0	50
2.. Raymond Terrace Bowling Club C..	214	271	(57)	0	84
2.. Lemon Tree Passage Bowling Clu..	341	396	(55)	0	79
2.. Engadine Bowling & Recreation Cl..	300	355	(55)	0	60
2.. Mount Lewis Bowling Club Co Op	140	191	(51)	0	65
2.. Bargo Sports Club	387	436	(49)	0	50
2.. Pearl Club Chatswood	570	616	(46)	(18)	87
2.. Ballina Bowling & Recreation Club..	150	195	(45)	0	78
2.. Mullumbimby Ex-Services Club	530	574	(44)	0	74
2.. Milton & Ulladulla Bowling Club C..	456	499	(43)	0	64
2.. Toongabbie Sports Club	241	280	(39)	4	63
2.. Earlwood Bowling & Rec Club	81	119	(38)	0	58
2.. Forbes Services Memorial Club Li..	251	289	(38)	0	87
2.. Queanbeyan Australian Football C..	366	403	(37)	0	67
2.. Panthers North Richmond	189	226	(37)	0	80
2.. Glen Innes & District Services Clu..	187	223	(36)	0	62
2.. Inverell Returned Servicemen's Cl..	79	114	(35)	0	62
2.. Hurstville R.S.L. Memorial Club Ltd	68	102	(34)	7	67
2.. Caringbah RSL Memorial Club Lim..	32	63	(31)	0	80
2.. Howlong Country Golf Club Ltd	509	539	(30)	0	76
2.. West Diggers	144	174	(30)	0	58
2.. Miranda RSL Sub-Branch Club Li..	350	378	(28)	0	71
2.. Milton Ulladulla Ex-Servos Club Li..	71	99	(28)	5	99
2.. Windang Bowls Club	280	308	(28)	0	55
2.. Penrith Gaels Cultural & Sporting ..	330	351	(21)	0	54
2.. Twin Towns Juniors Club	465	484	(19)	0	70
2.. Mudgee Soldiers Club Limited	139	157	(18)	(11)	92
2.. Collegians RLFC Balgownie	224	242	(18)	0	83
2.. Woy Woy Leagues Club	409	426	(17)	0	72
2.. Viking Sports Club Limited	358	373	(15)	0	66
2.. The Hills District Bowling Club Ltd	290	305	(15)	0	73
2.. Moss Vale Services Club Limited	298	313	(15)	0	79
2.. Bexley RSL & Community Club Li..	286	300	(14)	14	100
2.. Club Redfern	633	647	(14)	0	50
2.. Club Taree	75	87	(12)	0	100
2.. Engadine RSL & Citizens Club Ltd	217	229	(12)	0	80
2.. Penshurst RSL	207	218	(11)	0	96

4.1(c) Largest PGM Net Ranking Declines – Clubs with More than 100 GMs

P.. Name	Nov16 PGM Net Ranking	Nov15 PGM Net Ranking	Change in PGM Ranking Nov16 vs Nov..	Chnagne in Number of Gaming Machines	Nov16 Gaming Machines
2.. Barrier Social Democratic Club Li..	243	86	157	28	133
2.. St Marys District Band Club Limit..	336	189	147	0	189
2.. Mayfield Ex Services Club Ltd	608	482	126	0	180
2.. Rich River Golf Club Limited	452	354	98	0	138
2.. City of Sydney RSL & Community..	185	98	87	0	132
2.. Diggers The Entrance	263	194	69	0	197
2.. Avoca Beach Bowling & Recreati..	319	254	65	16	101
2.. Barham & District Services Memo..	314	251	63	0	136
2.. Wallsend RSL & Community Club..	201	139	62	47	265
2.. Yarrawonga & Border Golf Club L..	385	328	57	0	120
2.. Everglades Country Club	265	209	56	0	101
2.. Bathurst Panthers	204	155	49	7	123
2.. Camden Valley Country Club	279	232	47	18	202
2.. Cessnock Rugby League Support..	166	121	45	8	119
2.. Wests Mayfield	165	122	43	(1)	244
2.. Cabramatta Rugby League Club L..	110	70	40	2	160
2.. The Randwick Club	206	169	37	0	101
2.. Illawarra Master Builders Club Li..	273	236	37	0	208
2.. Warrilla Bowling & Recreation Clu..	238	202	36	8	218
2.. Riverstone Schofields Memorial ..	141	107	34	0	134
2.. The Entrance Leagues Club Limit..	122	88	34	0	146
2.. South Tweed Heads Bowls Club ..	386	353	33	0	131
2.. Balgowlah RSL Memorial Club	111	81	30	4	120
2.. East Maitland Bowling Club Ltd	126	96	30	8	164
2.. Wallarah Bay Recreation Club	113	84	29	6	132
2.. Mingara Recreation Club	104	77	27	1	485
2.. Toukley RSL Sub-Branch Club Li..	154	128	26	0	147
2.. Manly Warringah Rugby League ..	245	220	25	0	200
2.. Granville Diggers	262	238	24	0	139
2.. Club Central Menai	192	168	24	17	218
2.. Club Banora	364	341	23	0	196
2.. Ramsgate RSL Memorial Club Li..	58	36	22	12	189
2.. Oak Flats Bowling & Recreation ..	222	200	22	0	130
2.. Wagga R S L Club Ltd	138	116	22	0	195
2.. Western Suburbs Leagues Club Il..	67	46	21	(6)	257
2.. Five Dock RSL Community Club ..	91	71	20	0	166
2.. Dubbo RSL Memorial Club Limited	125	105	20	0	260
2.. Port Macquarie Panthers	93	73	20	0	227
2.. Twin Towns Services Club Limited	128	110	18	0	596
2.. Western Suburbs Soccer, Sports ..	73	56	17	23	235
2.. Penrith RSL Club Limited	101	85	16	0	242
2.. Sawtell RSL Club Limited	177	162	15	0	115
2.. Lithgow & District Workmen's Clu..	186	171	15	0	150
2.. Maroubra Seals Sports & Commu..	134	120	14	12	164
2.. Merimbula RSL Club Limited	215	201	14	0	122
2.. Shellharbour Workers Club Ltd	69	55	14	0	261
2.. Chester Hill RSL and Bowling Clu..	305	292	13	0	101
2.. Wests Cardiff	216	204	12	17	215
2.. West Pennant Hills Sports Club L..	260	249	11	22	150
2.. North Sydney Leagues Club Limit..	44	34	10	4	253
2.. Batemans Bay Soldiers Club Ltd	119	109	10	0	160

4.1(d) Largest PGM Net Ranking Declines – Clubs with 50 to 100 GMs

P.. Name	Nov16 PGM Net Ranking	Nov15 PGM Net Ranking	Change in PGM Ranking Nov16 vs No..	Chnagne in Number of Gaming Machines	Nov16 Gaming Machines
2.. Glenbrook Panthers	355	227	128	0	53
2.. Narrandera Ex Servicemen's Club ..	445	321	124	0	54
2.. Cowra Services Club	424	311	113	1	58
2.. Oatley RSL & Community Club Lim..	574	466	108	0	54
2.. Narrabri RSL Memorial & Citizens ..	429	323	106	0	66
2.. Illawarra Leagues Club Ltd	544	439	105	0	91
2.. Wingham District Memorial Service..	365	262	103	0	62
2.. The Entrance Bowling Club Ltd	401	299	102	0	76
2.. St George Motor Boat Club Limited	407	307	100	17	84
2.. Guildford Bowling Club	630	531	99	22	73
2.. Matraville R S L Sub-branch Club L..	384	288	96	0	95
3.. lakeside Golf Club - Camden	826	737	89	15	51
2.. Ourimbah-Lisarow RSL Club Ltd	461	376	85	0	77
2.. Mortdale RSL Community Club Lim..	533	449	84	1	58
2.. Terrigal Memorial Country Club Li..	329	247	82	0	92
2.. Kahibah Bowling Club Co-operativ..	441	362	79	0	50
2.. GyMEA Bowling & Recreation Club ..	699	621	78	14	51
2.. Wyong RSL Club	415	337	78	0	63
2.. Georges River 16Ft Sailing Club C..	610	535	75	0	52
2.. South Newcastle Rugby League Cl..	354	281	73	0	98
2.. Camden RSL Club Limited	205	134	71	0	50
2.. Dural Country Club	651	581	70	0	64
2.. Gundagai District Services Club Ltd	379	309	70	0	53
2.. Singleton Returned Servicemen's ..	285	216	69	0	80
2.. Cessnock Ex-Services Club Limited	718	650	68	0	69
2.. Tuncurry Beach Bowling Club	247	179	68	0	72
2.. Jets Sports Club Limited	685	619	66	0	53
2.. Yass Soldiers Club Limited	307	241	66	4	74
2.. Belmont Sportsmans Club Co-oper..	619	554	65	0	67
2.. Club Paceway	528	463	65	0	50
2.. Corrimal Leagues Club	552	488	64	20	70
2.. Shoalhaven Heads Bowling & Recr..	368	306	62	0	72
2.. Avalon Beach RSL Club Ltd	433	372	61	0	75
2.. Cowra Bowling Club Limited	335	274	61	0	50
2.. Sydney Markets Industries Club Li..	88	28	60	2	61
2.. Panania East Hills RSL Club Limited	188	129	59	0	88
2.. Kareela Golf & Social Club	645	587	58	0	80
2.. Yamba Bowling & Recreation Club ..	271	213	58	0	96
2.. Mosman Returned Servicemens Cl..	211	154	57	0	66
2.. Cardiff RSL Club Limited	292	235	57	0	98
2.. Katoomba RSL	269	212	57	10	94
2.. Figtree RSL Bowling Club	473	416	57	0	60
2.. Club on East	457	401	56	0	100
2.. Albion Park Bowling & Recreation ..	454	400	54	0	53
2.. Tocumwal Golf Club Limited	500	446	54	0	80
2.. Bondi Junction-Waverley RSL Sub...	529	477	52	0	58
2.. Maitland District Leagues Club	564	512	52	0	76
2.. Pambula Merimbula Golf Club Limi..	612	561	51	0	59
2.. Cyprus Community of NSW Limited	981	931	50	0	60
2.. Albion Park RSL Memorial Club	191	141	50	2	55
2.. Wangi District Workers Club Ltd	447	397	50	0	65
	Nov16 PGM Net Ranking	Nov15 PGM Net Ranking	Change in PGM Ranking Nov16 vs No..	Chnagne in Number of Gaming Machines	Nov16 Gaming Machines

4.2. November 2016 NSW Club Ranking Insights – Net Hold Rankings (November Qtr 2016 vs November Qtr 2015)

4.2(a) Largest Net Ranking Improvements – Clubs with More than 100 GMs

P.. Name	Nov16 Net Ranking	Nov15 Net Ranking	Change in Net Ranking Nov16 vs Nov15	Chnagne in Number of Gaming Machines	Nov16 Gaming Machines
2.. Illawarra District Rugby League Fo..	151	183	(32)	0	102
2.. WINDSOR RSL CLUB LTD	91	115	(24)	16	154
2.. Ashfield RSL Sub-Branch Club Li..	181	199	(18)	0	104
2.. West Pennant Hills Sports Club Ltd	146	164	(18)	22	150
2.. Port Macquarie City Bowling Club ..	134	151	(17)	0	141
2.. Berkeley Sports Club	137	153	(16)	0	131
2.. Workers Sports	94	110	(16)	20	123
2.. Griffith Ex-Servicemen's Club Limi..	101	116	(15)	0	156
2.. Bateau Bay Bowling Club	197	209	(12)	(1)	126
2.. Maitland City Bowls, Sports & Rec..	116	128	(12)	0	140
2.. Coomealla Memorial Sporting Clu..	109	121	(12)	0	174
2.. Echuca - Moama RSL & Citizens C..	96	108	(12)	0	139
2.. Club Condell Park	123	134	(11)	0	182
2.. City Of Parramatta RSL Club	154	165	(11)	0	129
2.. Baulkham Hills Sports Club	178	189	(11)	0	144
2.. Wests City	175	186	(11)	0	135
2.. Ingleburn RSL Sub-Branch Club Li..	58	68	(10)	(4)	247
2.. Club Mulwala	107	117	(10)	0	199
2.. Toronto District Workers Club Lim..	110	120	(10)	5	158
2.. Riverina Australian Football Club ..	136	144	(8)	0	162
2.. Catalina Country Club	163	171	(8)	0	132
2.. Hornsby R S L Club Ltd	41	48	(7)	8	383
2.. Gosford RSL Club	78	85	(7)	0	180
2.. Deniliquin RSL Club Ltd	200	207	(7)	3	110
2.. Goulburn Workers Club	104	111	(7)	0	150
2.. Mollymook Golf Club	184	191	(7)	0	105
2.. Wests Cardiff	92	99	(7)	17	215
2.. Maroubra Seals Sports & Commu..	106	112	(6)	12	164
2.. St George Masonic Club Limited	179	185	(6)	0	104
2.. Magpies Waitara	129	135	(6)	3	150
2.. Avoca Beach Bowling & Recreatio..	219	225	(6)	16	101
2.. Wallsend RSL & Community Club ..	73	79	(6)	47	265
2.. Soldiers Point Bowling Club Limit..	176	182	(6)	0	110
2.. Richmond Club Ltd	103	109	(6)	(10)	141
2.. Barooga Sports Club Ltd	108	113	(5)	(5)	174
2.. Mulwala Water Ski Club Ltd	122	127	(5)	0	149
2.. Burwood RSL Club	27	32	(5)	0	294
2.. Cronulla-Sutherland Leagues Clu..	114	119	(5)	8	165
2.. St George Leagues Club Limited	19	24	(5)	(1)	415
2.. ETTALONG DIGGERS	61	66	(5)	10	210
2.. Forster Tuncurry Memorial Servic..	83	88	(5)	8	168
2.. Casino Returned Servicemens Me..	173	178	(5)	0	103
2.. Fraternity Bowling & Recreation C..	135	140	(5)	2	131

4.2(b) Largest Net Ranking Improvements – Clubs with 50 to 100 GMs

P.. Name	Nov16 Net Ranking	Nov15 Net Ranking	Change in Net Ranking Nov16 vs Nov15	Chnagne in Number of Gaming Machines	Nov16 Gaming Machines
2.. New Brighton Golf Club Limited	324	664	(340)	20	51
2.. DOOLEYS Regents Park Sports Cl..	337	505	(168)	28	64
2.. Arncliffe Scots Sports & Social Cl..	314	412	(98)	0	50
2.. King Tom Club	460	540	(80)	0	63
2.. Camden Golf Club Ltd	283	341	(58)	0	57
2.. Woodburn Evans Head RSL Club ..	366	418	(52)	0	56
2.. Club Jervis Bay	260	310	(50)	0	86
2.. Hurstville R.S.L. Memorial Club Ltd	188	227	(39)	7	67
2.. South Grafton District Ex-Service..	278	316	(38)	0	59
2.. Thurgoona Country Club Resort	287	322	(35)	0	51
2.. Club Old Bar	315	350	(35)	0	55
2.. Eden Fishermen's Recreation Club	319	353	(34)	0	61
2.. Corrimal Leagues Club	371	404	(33)	20	70
2.. Bexley RSL & Community Club Li..	207	239	(32)	14	100
2.. Guildford Bowling Club	393	425	(32)	22	73
2.. Nambucca Heads RSL Club	185	217	(32)	0	94
2.. Kiama Golf Club	409	440	(31)	0	53
2.. Edgeworth Bowling Club Co-oper..	411	442	(31)	0	50
2.. Urunga Bowling Club Limited	343	373	(30)	0	53
2.. Hexham Bowling Club Co-operativ..	253	281	(28)	0	91
2.. Euston Bowling & Recreation Clu..	149	176	(27)	0	100
2.. Bargo Sports Club	360	387	(27)	0	50
2.. Singleton Bowling Club Co-operat..	388	415	(27)	0	55
2.. Emu Plains Sporting & Recreation..	349	376	(27)	0	50
2.. Queanbeyan Kangaroo Rugby Lea..	235	262	(27)	0	81
2.. Earlwood Bowling & Rec Club	221	246	(25)	0	58
2.. Toongabbie Sports Club	275	300	(25)	4	63
2.. Parkes Service & Citizens Club Co..	227	251	(24)	0	73
2.. Raymond Terrace Bowling Club C..	210	234	(24)	0	84
2.. Coffs Harbour & District Ex-Servic..	303	326	(23)	(1)	64
2.. Muswellbrook RSL Sub-branch Cl..	191	214	(23)	0	92
2.. Henry Lawson Club	326	348	(22)	0	52
2.. Mount Lewis Bowling Club Co Op	236	257	(21)	0	65
2.. Milton Ulladulla Ex-Servos Club Li..	138	159	(21)	5	99
2.. Inverell Returned Servicemen's Cl..	206	226	(20)	0	62
2.. Glen Innes & District Services Clu..	259	278	(19)	0	62
2.. Swansea RSL Club Ltd	192	210	(18)	0	91
2.. Budgewoi Soccer Club	291	309	(18)	0	50
2.. Queanbeyan Australian Football C..	294	311	(17)	0	67
2.. Panthers North Richmond	214	231	(17)	0	80
2.. Caringbah RSL Memorial Club Lim..	140	156	(16)	0	80
2.. Ballina Bowling & Recreation Club..	205	221	(16)	0	78
2.. Sussex Inlet RSL Club Ltd	234	250	(16)	(21)	92
2.. Mullumbimby Ex-Services Club	346	360	(14)	0	74
2.. Milton & Ulladulla Bowling Club C..	341	355	(14)	0	64
2.. Engadine Bowling & Recreation Cl..	300	314	(14)	0	60
2.. Miranda RSL Sub-Branch Club Li..	284	297	(13)	0	71
2.. West Diggers	256	269	(13)	0	58
2.. Tamworth Services Club Limited	276	289	(13)	(3)	85
2.. Lemon Tree Passage Bowling Clu..	271	283	(12)	0	79
2.. Windang Bowls Club	306	318	(12)	0	55
2.. Forbes Services Memorial Club Li..	224	235	(11)	0	87
2.. Viking Sports Club Limited	297	307	(10)	0	66
2.. Club Redfern	474	484	(10)	0	50
	Nov16 Net Ranking	Nov15 Net Ranking	Change in Net Ranking Nov16 vs Nov15	Chnagne in Number of Gaming Machines	Nov16 Gaming Machines

4.2(c) Largest Net Ranking Declines – Clubs with More than 100 GMs

P.. Name	Nov16 Net Ranking	Nov15 Net Ranking	Change in Net Ranking Nov16 vs Nov15	Chnagne in Number of Gaming Machines	Nov16 Gaming Machines
2.. Mayfield Ex Services Club Ltd	220	174	46	0	180
2.. Harbord Diggers - Mounties Group	169	131	38	(95)	115
2.. St Marys District Band Club Limited	131	102	29	0	189
2.. Barrier Social Democratic Club Li..	161	136	25	28	133
2.. Rich River Golf Club Limited	204	179	25	0	138
2.. Diggers The Entrance	119	97	22	0	197
2.. Barham & District Services Memor..	177	155	22	0	136
2.. The Entrance Leagues Club Limite..	121	100	21	0	146
2.. City of Sydney RSL & Community ..	143	124	19	0	132
2.. Cabramatta Rugby League Club Li..	98	83	15	2	160
2.. Bankstown RSL Club Ltd	118	104	14	(16)	155
2.. The Lakemba Club	117	103	14	0	110
2.. Sawtell RSL Club Limited	164	152	12	0	115
2.. Bathurst Panthers	158	147	11	7	123
2.. Yarrawonga & Border Golf Club Li..	203	193	10	0	120
2.. Bomaderry Bowling Club	171	161	10	0	106
2.. Cessnock Rugby League Support..	153	143	10	8	119
2.. Granville Diggers	159	150	9	0	139
2.. Everglades Country Club	199	190	9	0	101
2.. Kingsgrove RSL Club Ltd	115	107	8	0	124
2.. Toukley RSL Sub-Branch Club Li..	126	118	8	0	147
2.. St Marys R.S.L & Ex Servicemans ..	228	220	8	(20)	130
2.. Canterbury Hurlstone Park RSL Cl..	24	17	7	0	374
2.. Chester Hill RSL and Bowling Clu..	213	206	7	0	101
2.. Bathurst RSL Club Limited	105	98	7	(1)	137
2.. Merimbula RSL Club Limited	165	158	7	0	122
2.. Grafton District Services Club Ltd	156	149	7	(6)	130
2.. Oak Flats Bowling & Recreation Cl..	155	148	7	0	130
2.. South Tweed Heads Bowls Club Li..	194	187	7	0	131
2.. Wests Mayfield	76	69	7	(1)	244
2.. Western Suburbs Leagues Club III..	51	44	7	(6)	257
2.. Manly Warringah Rugby League C..	111	105	6	0	200
2.. The Randwick Club	183	177	6	0	101
2.. Western Suburbs Leagues Club Li..	22	16	6	(3)	474
2.. Dubbo RSL Memorial Club Limited	65	59	6	0	260
2.. Wagga R S L Club Ltd	88	82	6	0	195
2.. Illawarra Master Builders Club Lim..	112	106	6	0	208
2.. Cronulla R S L Memorial Club Ltd	144	139	5	0	121
2.. Club Central Hurstville	28	23	5	(3)	290
2.. East Maitland Bowling Club Ltd	99	94	5	8	164
2.. Port Macquarie Panthers	66	61	5	0	227
2.. Riverstone Schofields Memorial Cl..	130	125	5	0	134

4.2(d) Largest Net Ranking Declines – Clubs with 50 to 100 GMs

P.. Name	Nov16 Net Ranking	Nov15 Net Ranking	Change in Net Ranking Nov16 vs Nov15	Chnagne in Number of Gaming Machines	Nov16 Gaming Machines
2.. Narrandera Ex Servicemen's Club ..	378	324	54	0	54
2.. Cyprus Community of NSW Limited	683	634	49	0	60
2.. Oatley RSL & Community Club Li..	427	381	46	0	54
2.. Cessnock Ex-Services Club Limite..	462	417	45	0	69
2.. Mortdale RSL Community Club Li..	398	358	40	1	58
2.. Kareela Golf & Social Club	384	345	39	0	80
2.. Sydney Markets Industries Club Li..	211	172	39	2	61
2.. Dural Country Club	435	397	38	0	64
2.. Cowra Services Club	350	312	38	1	58
2.. Jets Sports Club Limited	492	454	38	0	53
2.. Illawarra Leagues Club Ltd	310	272	38	0	91
2.. Kahibah Bowling Club Co-operativ..	389	352	37	0	50
2.. Glenbrook Panthers	338	302	36	0	53
2.. Georges River 16Ft Sailing Club C..	458	423	35	0	52
2.. Belmont Sportsmans Club Co-ope..	407	378	29	0	67
2.. Maitland District Leagues Club	355	327	28	0	76
2.. Narrabri RSL Memorial & Citizens ..	321	293	28	0	66
2.. Figtree RSL Bowling Club	363	335	28	0	60
2.. Pambula Merimbula Golf Club Lim..	431	403	28	0	59
2.. Bondi Junction-Waverley RSL Su..	396	369	27	0	58
2.. Matraville R S L Sub-branch Club ..	245	218	27	0	95
2.. Ourimbah-Lisarow RSL Club Ltd	307	280	27	0	77
2.. Singleton Returned Servicemen's ..	249	223	26	0	80
2.. Terrigal Memorial Country Club Li..	238	212	26	0	92
2.. Club Paceway	426	400	26	0	50
2.. Club on East	267	242	25	0	100
2.. Club Willoughby	539	514	25	0	52
2.. Gundagai District Services Club Lt..	348	323	25	0	53
2.. The Entrance Bowling Club Ltd	288	264	24	0	76
2.. Tuncurry Beach Bowling Club	252	228	24	0	72
2.. Albion Park Bowling & Recreation ..	380	357	23	0	53
2.. Wyong RSL Club	325	303	22	0	63
2.. Cowra Bowling Club Limited	347	325	22	0	50
2.. Wingham District Memorial Servic..	309	287	22	0	62
2.. South Newcastle Rugby League C..	230	208	22	0	98
2.. Windale Gateshead Bowling Club	387	365	22	0	65
2.. Collegians' Port Kembla Leagues ..	419	398	21	0	61
2.. Avalon Beach RSL Club Ltd	304	284	20	0	75
	Nov16 Net Ranking	Nov15 Net Ranking	Change in Net Ranking Nov16 vs Nov15	Chnagne in Number of Gaming Machines	Nov16 Gaming Machines

5.1 November 2016 NSW Club Ranking Insights – Annual Average Net Hold Per GM Rankings (2016 vs 2015)

The Net Hold Per GM Rankings are a key measure of a Club's effectiveness, irrespective of its total number of machines. **Note** - Large changes are often attributable to significant structural changes in club activities (eg renovations, amalgamations, gaming floor changes etc).

5.1(a) Largest Annual Average PGM Net Ranking Improvements – Clubs with More than 100 GMs

P.. Name	2016 Av PGM Ranking	2015 Av PGM Ranking	Change in Av Annual PGM Ranking	Change in Gaming Machines Nov16 vs Nov15	Nov16 Gaming Machines
2.. Harbord Diggers - Mounties Group	182	370	(188)	(95)	115
2.. Bateau Bay Bowling Club	361	542	(181)	(1)	126
2.. Campbelltown RSL Club Limited	272	426	(154)	(37)	208
2.. Pittwater RSL Club Ltd	104	174	(70)	(82)	193
2.. Illawarra District Rugby League F..	121	191	(70)	0	102
2.. Birrong Bowling & Sports Club Ltd	269	329	(60)	0	127
2.. Broken Hill Musicians Club Ltd	382	442	(60)	0	101
2.. Cronulla R S L Memorial Club Ltd	151	209	(58)	0	121
2.. Wests City	266	310	(44)	0	135
2.. WINDSOR RSL CLUB LTD	93	136	(43)	16	154
2.. Gosford RSL Club	99	139	(40)	0	180
2.. Grafton District Services Club Ltd	206	246	(40)	(6)	130
2.. Catalina Country Club	242	280	(38)	0	132
2.. Tomakin Sports & Social Club Li..	400	437	(37)	0	107
2.. Casino Returned Servicemens M..	146	180	(34)	0	103
2.. Baulkham Hills Sports Club	401	430	(29)	0	144
2.. Maitland City Bowls, Sports & Re..	129	158	(29)	0	140
2.. Club Condell Park	277	303	(26)	0	182
2.. Beresfield Bowling Club Limited	221	247	(26)	0	125
2.. West Nelson Bay	105	131	(26)	2	180
2.. Albury Soldiers Sailors & Airmen..	129	154	(25)	(14)	318
2.. Lantern Club	53	75	(22)	0	157
2.. Woonona Bulli RSL Memorial Clu..	155	176	(21)	0	110
2.. Ashfield Catholic & Community C..	176	195	(19)	0	101
2.. Bowlers Club of NSW Ltd	237	256	(19)	(1)	119
2.. Granville Diggers	262	281	(19)	0	139
2.. Club Mulwala	223	242	(19)	0	199
2.. Camden Valley Country Club	229	246	(17)	18	202
2.. Merimbula RSL Club Limited	195	212	(17)	0	122
2.. Toronto District Workers Club Li..	131	147	(16)	5	158
2.. Bathurst RSL Club Limited	81	96	(15)	(1)	137
2.. Queanbeyan Leagues Club Limite..	65	80	(15)	0	373
2.. Bomaderry Bowling Club	118	133	(15)	0	106
2.. Guildford Rugby League Football..	76	89	(13)	0	242
2.. Cabramatta Bowling & Recreation..	49	61	(12)	0	125
2.. Kingsgrove RSL Club Ltd	71	83	(12)	0	124
2.. CLUB RIVERS	23	35	(12)	10	208
2.. Mittagong RSL Club	117	129	(12)	0	165
2.. Mollymook Golf Club	209	221	(12)	0	105
2.. Mekong Mounties Group	33	45	(12)	0	144
2.. Mulwala Water Ski Club Ltd	146	156	(10)	0	149
2.. Workers Blacktown	37	47	(10)	(20)	430
2.. Liverpool Catholic Club	16	26	(10)	34	435
2.. Goulburn & District Soldiers Club..	190	200	(10)	0	135

5.1(b) Largest Annual Average PGM Net Ranking Improvements – Clubs with 50 to 100 GMs

P.. Name	2016 Av PGM Ranking	2015 Av PGM Ranking	Change in Av Annual PGM Ranking	Change in Gaming Machines Nov16 vs Nov15	Nov16 Gaming Machines
2.. New Brighton Golf Club Limited	560	775	(215)	20	51
2.. Hurstville R.S.L. Memorial Club Lt..	77	270	(193)	7	67
2.. Pearl Club Chatswood	535	681	(146)	(18)	87
2.. Club Old Bar	345	441	(96)	0	55
2.. Windang Bowls Club	259	354	(95)	0	55
2.. Parkes Service & Citizens Club C..	154	246	(92)	0	73
2.. Emu Plains Sporting & Recreatio..	347	437	(90)	0	50
2.. Sussex Inlet RSL Club Ltd	361	447	(86)	(21)	92
2.. Muswellbrook & District Workers ..	86	167	(81)	6	61
2.. Viking Sports Club Limited	374	448	(74)	0	66
2.. Arncliffe Scots Sports & Social Cl..	338	404	(66)	0	50
2.. Greta Workers Sports & Recreati..	489	553	(64)	0	50
2.. Urunga Bowling Club Limited	379	441	(62)	0	53
2.. Coogee Diggers	519	580	(61)	0	64
2.. Camden Golf Club Ltd	318	378	(60)	0	57
2.. Nambucca Heads RSL Club	213	271	(58)	0	94
2.. Singleton Bowling Club Co-opera..	513	571	(58)	0	55
2.. Miranda RSL Sub-Branch Club Li..	348	404	(56)	0	71
2.. Forbes Services Memorial Club Li..	271	325	(54)	0	87
2.. Woodburn Evans Head RSL Club ..	425	477	(52)	0	56
2.. Bargo Sports Club	410	462	(52)	0	50
2.. Park Beach Bowling Club Limited	206	257	(51)	0	65
2.. Wauchope RSL Club Ltd	296	346	(50)	0	83
2.. Armidale Ex-Services Memorial C..	195	244	(49)	0	93
2.. Budgewoi Soccer Club	206	255	(49)	0	50
2.. Earlwood Bowling & Rec Club	119	164	(45)	0	58
2.. Thurgoona Country Club Resort	263	307	(44)	0	51
2.. King Tom Club	738	781	(43)	0	63
2.. Glen Innes & District Services Cl..	178	220	(42)	0	62
2.. Mount Lewis Bowling Club Co Op	164	205	(41)	0	65
2.. South Grafton District Ex-Servic..	261	302	(41)	0	59
2.. Lemon Tree Passage Bowling Clu..	346	387	(41)	0	79
2.. Bexley RSL & Community Club Li..	302	341	(39)	14	100
2.. Henry Lawson Club	337	375	(38)	0	52
2.. Leeton Soldiers Club Ltd	279	315	(36)	0	65
2.. Twin Towns Juniors Club	472	508	(36)	0	70
2.. Moss Vale Services Club Limited	311	346	(35)	0	79
2.. Coffs Harbour & District Ex-Servi..	397	431	(34)	(1)	64
2.. West Diggers	136	168	(32)	0	58
2.. Young Services & Citizens Co-op..	107	138	(31)	0	80
2.. Mosman Returned Servicemens ..	207	237	(30)	0	66
2.. Edgeworth Bowling Club Co-oper..	522	552	(30)	0	50
2.. Hexham Bowling Club Co-operati..	416	445	(29)	0	91
2.. Maitland District Leagues Club	557	584	(27)	0	76
2.. Singleton Returned Servicemens ..	241	266	(25)	0	64
2.. Panthers North Richmond	199	222	(23)	0	80
2.. Maroubra RSL Club Limited	478	500	(22)	0	70
2.. Cooma Ex-Services Club	238	260	(22)	0	66
2.. Kiama Leagues Club	138	159	(21)	0	61
2.. Ballina Bowling & Recreation Clu..	175	195	(20)	0	78
2.. Inverell Returned Servicemen's C..	81	101	(20)	0	62
2.. Raymond Terrace Bowling Club ..	233	253	(20)	0	84
2.. Shoalhaven Heads Bowling & Re..	281	301	(20)	0	72

5.1(c) Largest Annual Average PGM Net Ranking Declines – Clubs with More than 100 GMs

P.. Name	2016 Av PGM Ranking	2015 Av PGM Ranking	Change in Av Annual PGM Ranking	Change in Gaming Machines Nov16 vs Nov15	Nov16 Gaming Machines
2.. Mayfield Ex Services Club Ltd	546	462	84	0	180
2.. Bathurst Panthers	217	144	73	7	123
2.. Chester Hill RSL and Bowling Clu..	364	293	71	0	101
2.. The Randwick Club	205	136	69	0	101
2.. Rich River Golf Club Limited	406	338	68	0	138
2.. Barrier Social Democratic Club Li..	145	80	65	28	133
2.. Barham & District Services Memo..	300	243	57	0	136
2.. Wallsend RSL & Community Club..	184	127	57	47	265
2.. St Marys District Band Club Limit..	252	209	43	0	189
2.. Yarrawonga & Border Golf Club L..	353	313	40	0	120
2.. The Westport Club	173	134	39	7	231
2.. Balgowlah RSL Memorial Club	114	77	37	4	120
2.. Wallarah Bay Recreation Club	105	71	34	6	132
2.. Everglades Country Club	236	204	32	0	101
2.. Toukley RSL Sub-Branch Club Li..	165	133	32	0	147
2.. City of Sydney RSL & Community..	159	128	31	0	132
2.. Ashfield RSL Sub-Branch Club Li..	258	229	29	0	104
2.. West Pennant Hills Sports Club L..	261	232	29	22	150
2.. Port Macquarie City Bowling Club..	305	277	28	0	141
2.. St Marys R.S.L & Ex Servicemans..	569	543	26	(20)	130
2.. Diggers The Entrance	205	180	25	0	197
2.. Gladesville RSL & Community Cl..	184	161	23	0	119
2.. Commercial Club (Albury) Ltd	129	106	23	7	619
2.. Western Suburbs Leagues Club Il..	69	47	22	(6)	257
2.. Avoca Beach Bowling & Recreati..	284	263	21	16	101
2.. Lithgow & District Workmen's Clu..	206	185	21	0	150
2.. Warilla Bowling & Recreation Clu..	234	213	21	8	218
2.. Lismore & District Workers Club ..	111	90	21	(4)	146
2.. Wests Mayfield	142	121	21	(1)	244
2.. The Entrance Leagues Club Limit..	113	94	19	0	146
2.. Manly Warringah Rugby League ..	236	218	18	0	200
2.. Mingara Recreation Club	97	79	18	1	485
2.. Wests Cardiff	211	193	18	17	215
2.. Coffs Ex-Services Memorial and ..	59	42	17	4	247
2.. Dubbo RSL Memorial Club Limited	128	112	16	0	260
2.. Belmont 16 Foot Sailing Club	184	168	16	(21)	271
2.. Riverstone Schofields Memorial ..	160	144	16	0	134
2.. Forestville RSL Club Limited	258	243	15	(2)	146
2.. Barooga Sports Club Ltd	175	161	14	(5)	174
2.. Ettalong Memorial Bowling Club ..	103	89	14	0	120
2.. Twin Towns Services Club Limited	116	102	14	0	596
2.. Fraternity Bowling & Recreation ..	182	169	13	2	131
2.. Petersham RSL Club Limited	73	61	12	0	189
2.. Penrith RSL Club Limited	101	89	12	0	242
2.. Illawarra Master Builders Club Li..	263	251	12	0	208
2.. Cronulla-Sutherland Leagues Clu..	156	145	11	8	165
2.. Seagulls Club	129	118	11	0	221
2.. Five Dock RSL Community Club ..	70	60	10	0	166
2.. Maroubra Seals Sports & Commu..	120	110	10	12	164
2.. Batemans Bay Soldiers Club Ltd	122	112	10	0	160
2.. Wagga R S L Club Ltd	140	130	10	0	195
2.. Cessnock Rugby League Support..	126	116	10	8	119
	2016 Av PGM Ranking	2015 Av PGM Ranking	Change in Av Annual PGM Ranking	Change in Gaming Machines Nov16 vs Nov15	Nov16 Gaming Machines

5.1(d) Largest Annual Average PGM Net Ranking Declines – Clubs with 50 to 100 GMs

P.. Name	2016 Av PGM Ranking	2015 Av PGM Ranking	Change in Av Annual PGM Ranking	Change in Gaming Machines Nov16 vs Nov15	Nov16 Gaming Machines
2.. DOOLEYS Regents Park Sports C..	460	307	153	28	64
2.. Guildford Bowling Club	546	437	109	22	73
2.. Belmont Sportsmans Club Co-op..	617	515	102	0	67
2.. Gynea Bowling & Recreation Clu..	614	514	100	14	51
2.. Narooma Golf Club	435	351	84	0	50
2.. Wingham District Memorial Servi..	334	256	78	0	62
2.. Auburn Tennis & Recreation Club	313	238	75	0	53
2.. Glenbrook Panthers	306	234	72	0	53
2.. Terrigal Memorial Country Club L..	290	218	72	0	92
2.. St George Motor Boat Club Limite..	376	305	71	17	84
2.. Katoomba RSL	268	197	71	10	94
2.. Club Redfern	622	552	70	0	50
2.. Cowra Services Club	388	318	70	1	58
2.. Figtree RSL Bowling Club	433	364	69	0	60
2.. West Wyalong Services & Citizen..	576	509	67	0	51
2.. Toronto RSL Memorial Club Limit..	246	180	66	0	85
2.. Carlingford Bowling, Sports & Re..	453	389	64	0	80
2.. Dural Country Club	645	581	64	0	64
2.. Cardiff RSL Club Limited	278	214	64	0	98
2.. Oatley RSL & Community Club Li..	517	457	60	0	54
2.. Club on East	461	401	60	0	100
2.. Warilla Sports Club Limited	319	259	60	0	59
2.. Narrandera Ex Servicemen's Club..	427	368	59	0	54
2.. Cessnock Ex-Services Club Limit..	657	599	58	0	69
2.. Paddington/Woollahra RSL Memo..	595	538	57	0	50
2.. Rockdale RSL Sub-branch Club L..	327	270	57	0	82
2.. Albion Park RSL Memorial Club	189	132	57	2	55
2.. Corrimall Leagues Club	532	475	57	20	70
2.. Club Willoughby	755	699	56	0	52
2.. Springwood Bowling & Recreatio..	383	328	55	0	68
2.. Pambula Merimbula Golf Club Li..	601	548	53	0	59
2.. Kemps Creek Sporting & Bowling..	168	117	51	0	100
2.. Wellington Soldiers Memorial Clu..	272	221	51	0	56
2.. Kahibah Bowling Club Co-operati..	415	365	50	0	50
2.. Kingscliff Bowls Club Limited	278	229	49	0	80
2.. Armidale City Bowling Club	179	132	47	0	60
2.. Narrabri RSL Memorial & Citizens..	386	339	47	0	66
2.. Cyprus Community of NSW Limit..	970	926	44	0	60
2.. Windsor Leagues Club Ltd	382	340	42	0	80
2.. Panania East Hills RSL Club Limit..	176	135	41	0	88
2.. Yass Soldiers Club Limited	307	266	41	4	74
2.. Club Paceway	520	479	41	0	50
2.. Albion Park Bowling & Recreatio..	467	428	39	0	53
2.. South West Rocks Country Club	357	318	39	0	86
2.. East Cessnock Bowling Club	323	286	37	0	100
2.. Singleton Returned Servicemen's..	229	192	37	0	80
2.. The Entrance Bowling Club Ltd	380	344	36	0	76
2.. Bondi Junction-Waverley RSL Su..	512	477	35	0	58
2.. Woolgoolga Returned Services Cl..	441	406	35	0	60
2.. Illawarra Yacht Club Limited	453	418	35	0	96
2.. Erina Rugby League Football Clu..	373	338	35	0	100
2.. Georges River 16Ft Sailing Club ..	549	515	34	0	52
2.. Brighton-Le-Sands RSL Club Ltd	133	101	32	0	95
2.. Mortdale RSL Community Club Li..	509	477	32	1	58
2.. Avalon Beach RSL Club Ltd	450	419	31	0	75
2.. Wyong RSL Club	361	330	31	0	63
2.. Gundagai District Services Club ..	401	370	31	0	53
2.. Yamba Bowling & Recreation Clu..	282	252	30	0	96

5.2. November 2016 NSW Club Ranking Insights – Annual Average Net Hold Rankings (2016 vs 2015)

5.2(a) Largest Annual Average Net Ranking Improvements – Clubs with More than 100 GMs

P.. Name	2016 Av Net Ranking	2015 Av Net Ranking	Change in Av Annual Net Ranking	Change in Gaming Machines Nov16 vs No..	Nov16 Gaming Machines
2.. Bateau Bay Bowling Club	193	268	(75)	(1)	126
2.. Illawarra District Rugby League F..	157	184	(27)	0	102
2.. Birrong Bowling & Sports Club Ltd	172	198	(26)	0	127
2.. WINDSOR RSL CLUB LTD	100	125	(25)	16	154
2.. Camden Valley Country Club	116	137	(21)	18	202
2.. Cronulla R S L Memorial Club Ltd	143	162	(19)	0	121
2.. Workers Sports	93	110	(17)	20	123
2.. Broken Hill Musicians Club Ltd	236	252	(16)	0	101
2.. Avoca Beach Bowling & Recreati..	215	227	(12)	16	101
2.. Catalina Country Club	159	171	(12)	0	132
2.. Wests City	162	174	(12)	0	135
2.. Casino Returned Servicemens M..	166	177	(11)	0	103
2.. Cabramatta Bowling & Recreatio..	95	105	(10)	0	125
2.. West Pennant Hills Sports Club L..	151	160	(9)	22	150
2.. Baulkham Hills Sports Club	184	193	(9)	0	144
2.. Gosford RSL Club	85	94	(9)	0	180
2.. Lantern Club	78	86	(8)	0	157
2.. Liverpool Catholic Club	13	21	(8)	34	435
2.. Campbelltown RSL Club Limited	113	121	(8)	(37)	208
2.. Soldiers Point Bowling Club Limit..	175	183	(8)	0	110
2.. Mollymook Golf Club	179	187	(8)	0	105
2.. Ashfield Catholic & Community C..	178	185	(7)	0	101
2.. Granville Diggers	156	163	(7)	0	139
2.. Kingsgrove RSL Club Ltd	113	120	(7)	0	124
2.. Beresfield Bowling Club Limited	163	170	(7)	0	125
2.. Maitland City Bowls, Sports & Re..	123	130	(7)	0	140
2.. Woonona Bulli RSL Memorial Clu..	160	167	(7)	0	110
2.. Wests Cardiff	92	99	(7)	17	215
2.. Ingleburn RSL Sub-Branch Club ..	63	69	(6)	(4)	247
2.. CLUB RIVERS	48	54	(6)	10	208
2.. Toronto District Workers Club Li..	111	117	(6)	5	158
2.. Tomakin Sports & Social Club Li..	235	241	(6)	0	107
2.. Club Marconi of Bossley Park So..	19	24	(5)	0	355
2.. ETTALONG DIGGERS	61	66	(5)	10	210
2.. Club Mulwala	105	110	(5)	0	199
2.. Bomaderry Bowling Club	151	156	(5)	0	106
	2016 Av Net Ranking	2015 Av Net Ranking	Change in Av Annual Net Ranking	Change in Gaming Machines Nov16 vs No..	Nov16 Gaming Machines

5.2(b) Largest Annual Average Net Ranking Improvements – Clubs with 50 to 100 GMs

P.. Name	2016 Av Net Ranking	2015 Av Net Ranking	Change in Av Annual Net Ranking	Change in Gaming Machines Nov16 vs No..	Nov16 Gaming Machines
2.. New Brighton Golf Club Limited	495	643	(148)	20	51
2.. DOOLEYS Regents Park Sports C..	382	477	(95)	28	64
2.. Hurstville R.S.L. Memorial Club Lt..	201	290	(89)	7	67
2.. Muswellbrook & District Workers ..	215	271	(56)	6	61
3.. lakeside Golf Club - Camden	616	658	(42)	15	51
2.. Club Old Bar	330	366	(36)	0	55
2.. Emu Plains Sporting & Recreatio..	354	387	(33)	0	50
2.. Windang Bowls Club	303	335	(32)	0	55
2.. Arncliffe Scots Sports & Social Cl..	348	378	(30)	0	50
2.. Parkes Service & Citizens Club C..	218	248	(30)	0	73
2.. Greta Workers Sports & Recreati..	409	438	(29)	0	50
2.. Singleton Bowling Club Co-opera..	398	427	(29)	0	55
2.. Coogee Diggers	373	400	(27)	0	64
2.. Corrimal Leagues Club	377	404	(27)	20	70
2.. Pearl Club Chatswood	313	339	(26)	(18)	87
2.. Urunga Bowling Club Limited	350	376	(26)	0	53
2.. Bargo Sports Club	374	400	(26)	0	50
2.. Woodburn Evans Head RSL Club ..	355	380	(25)	0	56
2.. Bexley RSL & Community Club Li..	229	253	(24)	14	100
2.. Viking Sports Club Limited	305	329	(24)	0	66
2.. Earlwood Bowling & Rec Club	240	262	(22)	0	58
2.. Caringbah RSL Memorial Club Li..	147	168	(21)	0	80
2.. Miranda RSL Sub-Branch Club Li..	285	305	(20)	0	71
2.. King Tom Club	495	515	(20)	0	63
2.. Budgewoi Soccer Club	301	321	(20)	0	50
2.. Armidale Ex-Services Memorial C..	193	212	(19)	0	93
2.. Camden Golf Club Ltd	316	335	(19)	0	57
2.. Nambucca Heads RSL Club	196	214	(18)	0	94
2.. Edgeworth Bowling Club Co-oper..	421	439	(18)	0	50
2.. South Grafton District Ex-Servic..	290	306	(16)	0	59
2.. Thurgoona Country Club Resort	319	334	(15)	0	51
2.. Wauchope RSL Club Ltd	244	259	(15)	0	83
2.. Twin Towns Juniors Club	329	344	(15)	0	70
2.. Taren Point Bowling & Recreatio..	256	270	(14)	8	65
2.. Toongabbie Sports Club	279	293	(14)	4	63
2.. Park Beach Bowling Club Limited	259	273	(14)	0	65
2.. Glen Innes & District Services Cl..	259	273	(14)	0	62
2.. Inverell Returned Servicemen's C..	205	219	(14)	0	62
2.. Young Services & Citizens Co-op..	184	198	(14)	0	80
2.. Maitland District Leagues Club	352	365	(13)	0	76
2.. Henry Lawson Club	340	353	(13)	0	52
2.. Mount Lewis Bowling Club Co Op	245	257	(12)	0	65
2.. Forbes Services Memorial Club Li..	230	242	(12)	0	87
2.. Leeton Soldiers Club Ltd	282	294	(12)	0	65
2.. West Diggers	252	264	(12)	0	58
2.. Shoalhaven Heads Bowling & Re..	263	274	(11)	0	72
2.. Mosman Returned Servicemens ..	256	266	(10)	0	66
2.. Moss Vale Services Club Limited	258	268	(10)	0	79
2.. Coffs Harbour & District Ex-Servi..	318	328	(10)	(1)	64
2.. Raymond Terrace Bowling Club ..	220	230	(10)	0	84
2.. Singleton Returned Servicemens ..	272	282	(10)	0	64

5.2(c) Largest Annual Average Net Ranking Declines – Clubs with More than 100 GMs

P.. Name	2016 Av Net Ranking	2015 Av Net Ranking	Change in Av Annual Net Ranking	Change in Gaming Machines Nov16 vs No..	Nov16 Gaming Machines
2.. Harbord Diggers - Mounties Group	160	127	33	(95)	115
2.. Mayfield Ex Services Club Ltd	198	172	26	0	180
2.. Chester Hill RSL and Bowling Clu..	232	209	23	0	101
2.. St Marys R.S.L & Ex Servicemans..	241	219	22	(20)	130
2.. Barrier Social Democratic Club Li..	153	133	20	28	133
2.. The Randwick Club	185	166	19	0	101
2.. Rich River Golf Club Limited	197	178	19	0	138
2.. Barham & District Services Memo..	169	152	17	0	136
2.. Bathurst Panthers	163	149	14	7	123
2.. The Entrance Leagues Club Limit..	115	103	12	0	146
2.. Lismore & District Workers Club ..	109	98	11	(4)	146
2.. St Marys District Band Club Limit..	119	109	10	0	189
2.. Bankstown RSL Club Ltd	110	101	9	(16)	155
2.. Toukley RSL Sub-Branch Club Li..	126	117	9	0	147
2.. Barooga Sports Club Ltd	107	99	8	(5)	174
2.. Gladesville RSL & Community Cl..	158	150	8	0	119
2.. City of Sydney RSL & Community..	135	127	8	0	132
2.. Yarrawonga & Border Golf Club L..	200	192	8	0	120
2.. Building Workers Club Limited	166	159	7	(5)	138
2.. Balgowlah RSL Memorial Club	132	125	7	4	120
2.. Everglades Country Club	195	188	7	0	101
2.. Diggers The Entrance	102	95	7	0	197
2.. Batemans Bay Soldiers Club Ltd	104	97	7	0	160
2.. Port Macquarie City Bowling Club..	166	159	7	0	141
2.. Richmond Club Ltd	104	97	7	(10)	141
2.. Ashfield RSL Sub-Branch Club Li..	195	189	6	0	104
2.. Grafton District Services Club Ltd	151	145	6	(6)	130
2.. East Maitland Bowling Club Ltd	102	96	6	8	164
2.. The Westport Club	83	77	6	7	231
2.. Western Suburbs Leagues Club II..	51	45	6	(6)	257
2.. Ettalong Memorial Bowling Club ..	129	124	5	0	120
2.. Dubbo RSL Memorial Club Limited	65	60	5	0	260
	2016 Av Net Ranking	2015 Av Net Ranking	Change in Av Annual Net Ranking	Change in Gaming Machines Nov16 vs No..	Nov16 Gaming Machines

5.2(d) Largest Annual Average Net Ranking Declines – Clubs with 50 to 100 GMs

P.. Name	2016 Av Net Ranking	2015 Av Net Ranking	Change in Av Annual Net Ranking	Change in Gaming Machines Nov16 vs No..	Nov16 Gaming Machines
2.. Belmont Sportsmans Club Co-op..	410	358	52	0	67
2.. Cyprus Community of NSW Limit..	673	631	42	0	60
2.. Club Willoughby	541	507	34	0	52
2.. Cessnock Ex-Services Club Limit..	428	394	34	0	69
2.. Narooma Golf Club	384	350	34	0	50
2.. Dural Country Club	432	399	33	0	64
2.. Club Redfern	471	440	31	0	50
2.. Pambula Merimbula Golf Club Li..	430	399	31	0	59
2.. West Wyalong Services & Citizen..	444	415	29	0	51
2.. Gynea Bowling & Recreation Clu..	510	483	27	14	51
2.. Paddington/Woolahra RSL Memo..	460	433	27	0	50
2.. Club on East	267	240	27	0	100
2.. Armidale City Bowling Club	264	240	24	0	60
2.. Club Paceway	423	399	24	0	50
2.. Figtree RSL Bowling Club	346	323	23	0	60
2.. Oatley RSL & Community Club Li..	401	379	22	0	54
2.. Auburn Tennis & Recreation Club	327	305	22	0	53
2.. Toronto RSL Memorial Club Limit..	225	203	22	0	85
2.. Cowra Services Club	337	316	21	1	58
2.. Narrandera Ex Servicemen's Club..	365	345	20	0	54
2.. Rockdale RSL Sub-branch Club L..	257	238	19	0	82
2.. Glenbrook Panthers	324	305	19	0	53
2.. Carlingford Bowling, Sports & Re..	295	277	18	0	80
2.. Albion Park RSL Memorial Club	282	264	18	2	55
2.. Wingham District Memorial Servi..	302	284	18	0	62
2.. City Diggers Wollongong	230	212	18	(10)	92
2.. Bondi Junction-Waverley RSL Su..	388	371	17	0	58
2.. Mortdale RSL Community Club Li..	388	371	17	1	58
2.. Woolgoolga Returned Services Cl..	352	335	17	0	60
2.. South West Rocks Country Club	259	242	17	0	86
2.. Kingscliff Bowls Club Limited	246	229	17	0	80
2.. Warilla Sports Club Limited	309	292	17	0	59
2.. Georges River 16Ft Sailing Club ..	429	413	16	0	52
2.. Sydney Markets Industries Club L..	194	178	16	2	61
2.. Gunnedah Services & Bowling Cl..	251	235	16	0	63
2.. Kemps Creek Sporting & Bowling..	176	161	15	0	100
2.. Albion Park Bowling & Recreation..	386	371	15	0	53
2.. East Cessnock Bowling Club	222	207	15	0	100
2.. Illawarra Yacht Club Limited	269	254	15	0	96
2.. Mullumbimby Ex-Services Club	346	332	14	0	74
2.. Cardiff RSL Club Limited	209	195	14	0	98
2.. Singleton Returned Servicemen's..	229	215	14	0	80
2.. Terrigal Memorial Country Club L..	222	208	14	0	92
2.. Mudgee Soldiers Club Limited	178	165	13	(11)	92
2.. Tamworth Services Club Limited	277	264	13	(3)	85
2.. Wellington Soldiers Memorial Clu..	302	289	13	0	56
2.. Shoalhaven Ex Servicemens Spo..	211	198	13	0	60
2.. Windsor Leagues Club Ltd	275	263	12	0	80
2.. Kareela Golf & Social Club	365	353	12	0	80
2.. Tocumwal Golf Club Limited	312	300	12	0	80
2.. Brighton-Le-Sands RSL Club Ltd	171	160	11	0	95
2.. Bermagui Country Club	411	400	11	0	52
2.. Gundagai District Services Club ..	361	350	11	0	53
2.. Springwood Bowling & Recreation..	302	291	11	0	68
2.. Erina Rugby League Football Clu..	235	224	11	0	100

6.1 November 2016 NSW Club Ranking Insights – Net Hold Per GM Rankings (November 2016 vs August 2016)

The Net Hold Per GM Rankings are a key measure of a Club's effectiveness, irrespective of its total number of machines. **Note** - Large changes are often attributable to significant structural changes in club activities (eg renovations, amalgamations, gaming floor changes etc).

6.1(a) Largest Current Quarter PGM Net Ranking Improvements – Clubs with More than 100 GMs

P.. Name	Nov16 PGM Ranking	Aug16 PGM Ranking	Change in PGM Ranking Nov16 vs Aug16	Change in Gaming Machines Nov16 vs Aug16	Nov16 Gaming Machines
2.. Port Macquarie City Bowling Club Limited	179	332	(153)	0	141
2.. Merimbula-Imlay Bowling Club Limited	135	238	(103)	(3)	121
2.. City Of Parramatta RSL Club	219	314	(95)	1	129
2.. St Marys R.S.L & Ex Servicemens Club Ltd	478	566	(88)	(20)	130
2.. Barooga Sports Club Ltd	161	246	(85)	(2)	174
2.. Mulwala Water Ski Club Ltd	129	214	(85)	0	149
2.. Ashfield RSL Sub-Branch Club Limited	208	285	(77)	0	104
2.. Fraternity Bowling & Recreation Club Ltd	142	215	(73)	0	131
2.. Chester Hill RSL and Bowling Club Co-oper..	305	374	(69)	0	101
2.. West Pennant Hills Sports Club Ltd	260	322	(62)	0	150
2.. Deniliquin RSL Club Ltd	308	369	(61)	0	110
2.. The Randwick Club	206	264	(58)	0	101
2.. Corowa RSL Club Limited	301	359	(58)	(7)	205
2.. Barham & District Services Memorial Club ..	314	366	(52)	0	136
2.. Illawarra District Rugby League Football Cl..	107	157	(50)	0	102
2.. Riverina Australian Football Club Limited	256	297	(41)	0	162
2.. Rich River Golf Club Limited	452	493	(41)	0	138
2.. Catalina Country Club	244	284	(40)	0	132
2.. Cronulla R S L Memorial Club Ltd	147	186	(39)	0	121
2.. Riverstone Schofields Memorial Club Limit..	141	178	(37)	0	134
2.. Harbord Diggers - Mounties Group	209	242	(33)	0	115
2.. Batemans Bay Soldiers Club Ltd	119	151	(32)	0	160
2.. Tomakin Sports & Social Club Limited	413	444	(31)	0	107
2.. Maitland City Bowls, Sports & Rec Club	103	133	(30)	0	140
2.. Coomealla Memorial Sporting Club Limited	170	198	(28)	0	174
2.. Maroubra Seals Sports & Community Club ..	134	160	(26)	5	164
2.. Echuca - Moama RSL & Citizens Club Limit..	66	92	(26)	0	139
2.. Ballina RSL Club Limited	145	170	(25)	0	209
2.. Yarrawonga & Border Golf Club Limited	385	410	(25)	0	120
2.. Soldiers Point Bowling Club Limited	212	237	(25)	0	110
2.. Woonona Bulli RSL Memorial Club Limited	152	176	(24)	0	110
2.. Berkeley Sports Club	155	179	(24)	0	131
2.. Gosford RSL Club	74	97	(23)	0	180
2.. Lismore & District Workers Club Limited	96	118	(22)	(4)	146
2.. Western Suburbs Leagues Club Illawarra Ltd	67	89	(22)	(24)	257
2.. Merimbula RSL Club Limited	215	236	(21)	0	122
2.. Gladesville RSL & Community Club Limited	182	202	(20)	0	119
2.. Toukley RSL Sub-Branch Club Limited	154	174	(20)	0	147
2.. Club Banora	364	383	(19)	0	196
2.. City Tattersalls Club	63	81	(18)	(6)	285
2.. Bowlers Club of NSW Ltd	240	256	(16)	0	119
2.. Baulkham Hills Sports Club	370	386	(16)	0	144
2.. West Nelson Bay	115	131	(16)	7	180
2.. WINDSOR RSL CLUB LTD	80	96	(16)	4	154
2.. Mittagong RSL Club	99	114	(15)	0	165

6.1(b) Largest Current Quarter PGM Net Ranking Improvements – Clubs with 50 to 100 GMs

P.. Name	Nov16 PGM Ranking	Aug16 PGM Ranking	Change in PGM Ranking Nov16 vs Aug16	Change in Gaming Machines Nov16 vs Aug16	Nov16 Gaming Machines
2.. Club Jervis Bay	375	544	(169)	0	86
2.. Thurgoona Country Club Resort	172	286	(114)	0	51
2.. Earlwood Bowling & Rec Club	81	189	(108)	0	58
2.. Eden Fishermen's Recreation Club	390	495	(105)	0	61
2.. King Tom Club	686	790	(104)	0	63
2.. Kiama Golf Club	513	610	(97)	0	53
2.. Club Old Bar	306	400	(94)	0	55
2.. South West Rocks Country Club	324	411	(87)	0	86
2.. Camden Golf Club Ltd	228	313	(85)	0	57
2.. Forster Bowling Club Limited	310	394	(84)	0	80
2.. Woolgoolga Returned Services Club Limited	411	490	(79)	0	60
2.. Corrimal RSL Memorial Club Ltd	259	334	(75)	0	60
2.. Coffs Harbour & District Ex-Servicemen & ..	349	416	(67)	0	64
2.. Gundagai District Services Club Ltd	379	442	(63)	0	53
2.. Sussex Inlet RSL Club Ltd	315	378	(63)	0	92
2.. Moama Sports Club	563	624	(61)	0	77
2.. Nelson Bay Bowling & Recreation Club	203	263	(60)	(1)	75
2.. Pambula Merimbula Golf Club Limited	612	670	(58)	0	59
2.. Budgewoi Soccer Club	164	217	(53)	0	50
2.. Paddington/Woolahra RSL Memorial & Co..	571	623	(52)	0	50
2.. New Brighton Golf Club Limited	293	344	(51)	0	51
2.. Arncliffe Scots Sports & Social Club Limited	253	301	(48)	0	50
2.. Singleton Bowling Club Co-operative Limit..	481	529	(48)	0	55
2.. Moss Vale Services Club Limited	298	345	(47)	0	79
2.. Cooma Ex-Services Club	236	281	(45)	0	66
2.. Belmont Sportsmans Club Co-operative Li..	619	662	(43)	0	67
2.. Assyrian Sports & Cultural Club	295	338	(43)	0	56
2.. Kemps Creek Sporting & Bowling Club Ltd	105	147	(42)	0	100
2.. Central Charlestown Leagues Club	342	384	(42)	0	70
2.. Hexham Bowling Club Co-operative Limited	392	433	(41)	0	91
2.. Padstow RSL Club Limited	340	380	(40)	0	69
2.. Collegians' Port Kembla Leagues Club	601	640	(39)	0	61
2.. Armidale City Bowling Club	167	205	(38)	0	60
2.. Kingswood Sports Club	337	373	(36)	0	95
2.. Engadine RSL & Citizens Club Ltd	217	250	(33)	0	80
2.. Howlong Country Golf Club Ltd	509	541	(32)	0	76
2.. Albion Park Bowling & Recreation Club Ltd	454	486	(32)	0	53
2.. City Diggers Wollongong	291	323	(32)	0	92
2.. Queanbeyan Kangaroo Rugby League Foot..	248	280	(32)	0	81
2.. Coogee Diggers	514	545	(31)	0	64
2.. Tocumwal Golf Club Limited	500	531	(31)	0	80
2.. The Pinnacle South Hurstville RSL Club	95	125	(30)	0	67
2.. St George Motor Boat Club Limited	407	437	(30)	0	84
2.. Bermagui Country Club	534	560	(26)	0	52
2.. Coolangatta & Tweed Heads Golf Club	640	666	(26)	0	56
2.. Warilla Sports Club Limited	313	339	(26)	0	59
2.. Auburn Tennis & Recreation Club	325	350	(25)	0	53
2.. Nambucca Heads RSL Club	181	206	(25)	0	94
2.. Mount Lewis Bowling Club Co Op	140	164	(24)	0	65
2.. Griffith Leagues Club Southside	176	200	(24)	2	93
2.. West Wyalong Services & Citizens Club Ltd	558	582	(24)	0	51
2.. Narooma Golf Club	430	453	(23)	0	50
2.. Bexley RSL & Community Club Limited	286	307	(21)	5	100
2.. Tamworth Services Club Limited	405	426	(21)	0	85
2.. Yass Soldiers Club Limited	307	327	(20)	0	74
	Nov16 PGM Ranking	Aug16 PGM Ranking	Change in PGM Ranking Nov16 vs Aug16	Change in Gaming Machines Nov16 vs Aug16	Nov16 Gaming Machines

6.1(c) Largest Current Quarter PGM Net Ranking Declines – Clubs with More than 100 GMs

P.. Name	Nov16 PGM Ranking	Aug16 PGM Ranking	Change in PGM Ranking Nov16 vs Aug16	Change in Gaming Machines Nov16 vs Aug16	Nov16 Gaming Machines
2.. Barrier Social Democratic Club Limited	243	119	124	29	133
2.. St Marys District Band Club Limited	336	233	103	0	189
2.. Camden Valley Country Club	279	210	69	18	202
2.. Mayfield Ex Services Club Ltd	608	539	69	0	180
2.. Grafton District Services Club Ltd	227	161	66	0	130
2.. Cessnock Rugby League Supporters Club	166	107	59	8	119
2.. Bomaderry Bowling Club	158	103	55	0	106
2.. Bateau Bay Bowling Club	381	328	53	1	126
2.. Broken Hill Musicians Club Ltd	416	365	51	0	101
2.. Diggers The Entrance	263	219	44	0	197
2.. City of Sydney RSL & Community Club Lim..	185	144	41	0	132
2.. Belmont 16 Foot Sailing Club	197	158	39	(13)	271
2.. Club Central Menai	192	153	39	16	218
2.. Birrong Bowling & Sports Club Ltd	249	213	36	0	127
2.. City of Blacktown RSL Club Ltd	162	126	36	0	208
2.. Tweed Heads Bowls Club Ltd	148	113	35	0	250
2.. Bankstown RSL Club Ltd	137	104	33	0	155
2.. East Maitland Bowling Club Ltd	126	98	28	8	164
2.. Wests City	304	277	27	0	135
2.. Wallsend RSL & Community Club Limited	201	175	26	0	265
2.. Five Dock RSL Community Club Limited	91	67	24	0	166
2.. Avoca Beach Bowling & Recreation Club Ltd	319	295	24	1	101
2.. Twin Towns Services Club Limited	128	106	22	0	596
2.. Wests Mayfield	165	143	22	3	244
2.. Magpies Waitara	193	172	21	0	150
2.. St George Masonic Club Limited	202	182	20	0	104
2.. Casino Returned Servicemens Memorial Cl..	159	140	19	0	103
2.. Shoalhaven Ex-Servicemen's Club Limited	109	90	19	0	105
2.. Beresfield Bowling Club Limited	230	212	18	0	125
2.. The Entrance Leagues Club Limited	122	105	17	0	146
2.. Building Workers Club Limited	261	245	16	0	138
2.. West Tamworth League Club Limited	84	69	15	0	161
2.. Bathurst Panthers	204	190	14	0	123
2.. Oak Flats Bowling & Recreation Club Limit..	222	208	14	0	130
2.. Penrith RSL Club Limited	101	87	14	0	242
2.. Illawarra Master Builders Club Limited	273	259	14	0	208
2.. Epping RSL (Sub-branch) & Community Cl..	46	33	13	0	240
2.. Balgowlah RSL Memorial Club	111	99	12	0	120
2.. Everglades Country Club	265	253	12	0	101
2.. Orange Ex-Services Club	53	41	12	3	211
2.. Moorebank Sports Club Ltd	86	74	12	(2)	183
2.. Wallarah Bay Recreation Club	113	102	11	0	132
2.. Cronulla-Sutherland Leagues Club Ltd	156	146	10	0	165
2.. Smithfield RSL	41	31	10	0	325
2.. Doyalson Wyee RSL Club Limited	40	30	10	0	220

6.1(d) Largest Current Quarter PGM Net Ranking Declines – Clubs with 50 to 100 GMs

P.. Name	Nov16 PGM Ranking	Aug16 PGM Ranking	Change in PGM Ranking Nov16 vs Aug16	Change in Gaming Machines Nov16 vs Aug16	Nov16 Gaming Machines
2.. Narrabri RSL Memorial & Citizens Club Limi..	429	321	108	0	66
2.. Lightning Ridge District Bowling Club Ltd	303	201	102	0	91
2.. Jets Sports Club Limited	685	590	95	0	53
2.. Shoalhaven Heads Bowling & Recreation Cl..	368	274	94	0	72
2.. Bomaderry RSL Club Ltd	807	714	93	0	54
2.. Cessnock Ex-Services Club Limited	718	627	91	0	69
2.. Windang Bowls Club	280	194	86	0	55
2.. Guildford Bowling Club	630	546	84	20	73
2.. Matraville R S L Sub-branch Club Ltd	384	300	84	0	95
2.. Wauchope RSL Club Ltd	333	249	84	0	83
2.. Illawarra Leagues Club Ltd	544	461	83	0	91
2.. Gynea Bowling & Recreation Club Limited	699	618	81	13	51
2.. Singleton Returned Servicemen's Club Ltd	285	204	81	0	80
2.. Wyong RSL Club	415	341	74	0	63
2.. Queanbeyan Australian Football Club Ltd	366	293	73	0	67
2.. Park Beach Bowling Club Limited	221	148	73	0	65
2.. The Entrance Bowling Club Ltd	401	329	72	0	76
2.. Mortdale RSL Community Club Limited	533	462	71	0	58
2.. Ourimbah-Lisarow RSL Club Ltd	461	390	71	0	77
2.. Cowra Bowling Club Limited	335	267	68	0	50
2.. Muswellbrook & District Workers Club Ltd	123	55	68	0	61
2.. Kahibah Bowling Club Co-operative Limited	441	376	65	0	50
2.. Charlestown Bowling Club	360	296	64	0	84
2.. Munmorah United Bowling Club Ltd	282	218	64	0	65
2.. Woodburn Evans Head RSL Club Ltd	444	381	63	0	56
2.. Maitland District Leagues Club	564	502	62	0	76
2.. Emu Plains Sporting & Recreation Club Ltd	338	279	59	0	50
2.. Toongabbie Sports Club	241	183	58	4	63
2.. Glenbrook Panthers	355	298	57	0	53
2.. Pearl Club Chatswood	570	514	56	0	87
2.. Leeton Soldiers Club Ltd	328	273	55	0	65
2.. Narrandera Ex Servicemen's Club Limited	445	393	52	0	54
2.. Byron Bay Services Club	180	128	52	0	60
2.. Club Dubbo	278	227	51	0	71
2.. Mosman Returned Servicemens Club Limit..	211	162	49	0	66
2.. Club Willoughby	755	706	49	0	52
2.. Figtree RSL Bowling Club	473	425	48	0	60
2.. Umina Beach Bowling Club	270	223	47	0	73
2.. Parkes Service & Citizens Club Co-operativ..	171	124	47	0	73
2.. Dural Country Club	651	605	46	0	64
2.. Miranda RSL Sub-Branch Club Limited	350	306	44	0	71
2.. Penrith Gaels Cultural & Sporting Associati..	330	287	43	0	54
2.. Glen Innes & District Services Club Limited	187	145	42	0	62
2.. Kareela Golf & Social Club	645	604	41	0	80
2.. Sydney Markets Industries Club Limited	88	47	41	0	61
2.. Kurri Kurri Bowling Club	190	149	41	0	80
2.. Henry Lawson Club	302	262	40	0	52
2.. Camden RSL Club Limited	205	166	39	0	50
2.. The Juniors Malabar	658	620	38	0	60
2.. Picton Bowling Club	321	283	38	0	50
2.. Cowra Services Club	424	387	37	1	58
2.. Cardiff RSL Club Limited	292	255	37	0	98
2.. Pelican Flat RSL Sub-branch Club Limited	438	401	37	0	69
2.. Twin Towns Juniors Club	465	428	37	0	70
2.. Windale Gateshead Bowling Club	562	526	36	0	65
2.. Woy Woy Leagues Club	409	375	34	0	72
2.. Club Redfern	633	601	32	0	50
	Nov16 PGM Ranking	Aug16 PGM Ranking	Change in PGM Ranking Nov16 vs Aug16	Change in Gaming Machines Nov16 vs Aug16	Nov16 Gaming Machines

6.2. November 2016 NSW Club Ranking Insights – Net Rankings (November 2016 vs August 2016)

6.2(a) Largest Current Quarter Net Ranking Improvements – Clubs with More than 100 GMs

P.. Name	Nov16 Net Ranking	Aug16 Net Ranking	Change in Net Ranking Nov16 vs Aug16	Change in Gaming Machines Nov16 vs A..	Nov16 Gaming Machines
2.. Port Macquarie City Bowling Club L..	134	166	(32)	0	141
2.. City Of Parramatta RSL Club	154	178	(24)	1	129
2.. Ashfield RSL Sub-Branch Club Limi..	181	204	(23)	0	104
2.. Merimbula-Imlay Bowling Club Limi..	142	163	(21)	(3)	121
2.. Chester Hill RSL and Bowling Club ..	213	233	(20)	0	101
2.. The Randwick Club	183	202	(19)	0	101
2.. Illawarra District Rugby League Foo..	151	170	(19)	0	102
2.. Deniliquin RSL Club Ltd	200	218	(18)	0	110
2.. Batemans Bay Soldiers Club Ltd	100	117	(17)	0	160
2.. Rich River Golf Club Limited	204	221	(17)	0	138
2.. Barooga Sports Club Ltd	108	124	(16)	(2)	174
2.. Maroubra Seals Sports & Communit..	106	121	(15)	5	164
2.. Fraternity Bowling & Recreation Clu..	135	149	(14)	0	131
2.. Echuca - Moama RSL & Citizens Clu..	96	110	(14)	0	139
2.. Tomakin Sports & Social Club Limit..	239	252	(13)	0	107
2.. Yarrawonga & Border Golf Club Lim..	203	215	(12)	0	120
2.. Mulwala Water Ski Club Ltd	122	132	(10)	0	149
2.. Cronulla R S L Memorial Club Ltd	144	154	(10)	0	121
2.. West Pennant Hills Sports Club Ltd	146	156	(10)	0	150
2.. Goulburn Workers Club	104	113	(9)	0	150
2.. Lismore & District Workers Club Li..	102	111	(9)	(4)	146
2.. Coomealla Memorial Sporting Club ..	109	118	(9)	0	174
2.. WINDSOR RSL CLUB LTD	91	100	(9)	4	154
2.. Harbord Diggers - Mounties Group	169	176	(7)	0	115
2.. Riverina Australian Football Club Li..	136	143	(7)	0	162
2.. Maitland City Bowls, Sports & Rec ..	116	123	(7)	0	140
2.. City Of Fairfield RSL Memorial Club ..	15	21	(6)	0	332
2.. St George Leagues Club Limited	19	25	(6)	0	415
2.. Ballina RSL Club Limited	81	87	(6)	0	209
2.. Gosford RSL Club	78	84	(6)	0	180
2.. West Nelson Bay	90	95	(5)	7	180
2.. Riverstone Schofields Memorial Clu..	130	135	(5)	0	134

6.2(b) Largest Current Quarter Net Ranking Improvements – Clubs with 50 to 100 GMs

P.. Name	Nov16 Net Ranking	Aug16 Net Ranking	Change in Net Ranking Nov16 vs Aug16	Change in Gaming Machines Nov16 vs A..	Nov16 Gaming Machines
2.. King Tom Club	460	538	(78)	0	63
3.. lakeside Golf Club - Camden	588	660	(72)	14	51
2.. Club Jervis Bay	260	317	(57)	0	86
2.. Earlwood Bowling & Rec Club	221	274	(53)	0	58
2.. Eden Fishermen's Recreation Club	319	372	(53)	0	61
2.. Kiama Golf Club	409	452	(43)	0	53
2.. Woolgoolga Returned Services Clu..	336	378	(42)	0	60
2.. Thurgoona Country Club Resort	287	326	(39)	0	51
2.. Paddington/Woollahra RSL Memori..	443	482	(39)	0	50
2.. Pambula Merimbula Golf Club Limi..	431	470	(39)	0	59
2.. Moama Sports Club	353	389	(36)	0	77
2.. Gundagai District Services Club Ltd	348	382	(34)	0	53
2.. Club Old Bar	315	347	(32)	0	55
2.. South West Rocks Country Club	246	275	(29)	0	86
2.. Camden Golf Club Ltd	283	311	(28)	0	57
2.. Belmont Sportsmans Club Co-oper..	407	434	(27)	0	67
2.. Nelson Bay Bowling & Recreation ..	229	255	(26)	(1)	75
2.. Triglav Mounties Group	147	172	(25)	0	54
2.. Guildford Bowling Club	393	418	(25)	20	73
2.. DOOLEYS Regents Park Sports Cl..	337	361	(24)	10	64
2.. Coolangatta & Tweed Heads Golf C..	455	479	(24)	0	56
2.. Sussex Inlet RSL Club Ltd	234	257	(23)	0	92
2.. Collegians' Port Kembla Leagues C..	419	442	(23)	0	61
2.. The Pinnacle South Hurstville RSL ..	202	224	(22)	0	67
2.. Forster Bowling Club Limited	257	279	(22)	0	80
2.. Arncliffe Scots Sports & Social Clu..	314	335	(21)	0	50
2.. Coffs Harbour & District Ex-Servic..	303	324	(21)	0	64
2.. Hexham Bowling Club Co-operativ..	253	273	(20)	0	91
2.. Bexley RSL & Community Club Li..	207	226	(19)	5	100
2.. New Brighton Golf Club Limited	324	343	(19)	0	51
2.. Kemps Creek Sporting & Bowling ..	152	171	(19)	0	100
2.. Corrimall RSL Memorial Club Ltd	290	308	(18)	0	60
2.. Taren Point Bowling & Recreation ..	241	258	(17)	4	65
2.. GyMEA Bowling & Recreation Club ..	515	531	(16)	13	51
2.. Tocumwal Golf Club Limited	313	329	(16)	0	80
2.. Coogee Diggers	374	388	(14)	0	64
2.. Cooma Ex-Services Club	268	282	(14)	0	66
2.. Albion Park Bowling & Recreation ..	380	394	(14)	0	53
2.. Mount Lewis Bowling Club Co Op	236	249	(13)	0	65
2.. Moss Vale Services Club Limited	254	267	(13)	0	79
2.. Queanbeyan Kangaroo Rugby Lea..	235	248	(13)	0	81
2.. Budgewoi Soccer Club	291	304	(13)	0	50
2.. Howlong Country Golf Club Ltd	330	342	(12)	0	76
2.. Griffith Leagues Club Southside	187	199	(12)	2	93
2.. Kingswood Sports Club	232	244	(12)	0	95
2.. Engadine RSL & Citizens Club Ltd	225	237	(12)	0	80
2.. Nambucca Heads RSL Club	185	196	(11)	0	94
2.. Assyrian Sports & Cultural Club	311	322	(11)	0	56
2.. Panania East Hills RSL Club Limited	198	208	(10)	0	88
2.. Armidale City Bowling Club	261	271	(10)	0	60
2.. Narooma Golf Club	383	393	(10)	0	50
2.. Raymond Terrace Bowling Club Co..	210	220	(10)	0	84
2.. Milton & Ulladulla Bowling Club Co..	341	351	(10)	0	64
2.. Singleton Bowling Club Co-operati..	388	398	(10)	0	55
2.. City Diggers Wollongong	226	236	(10)	0	92

6.2(c) Largest Current Quarter Net Ranking Declines – Clubs with More than 100 GMs

P.. Name	Nov16 Net Ranking	Aug16 Net Ranking	Change in Net Ranking Nov16 vs Aug16	Change in Gaming Machines Nov16 vs Au..	Nov16 Gaming Machines
2.. Mayfield Ex Services Club Ltd	220	190	30	0	180
2.. Bomaderry Bowling Club	171	144	27	0	106
2.. Grafton District Services Club Ltd	156	136	20	0	130
2.. Bankstown RSL Club Ltd	118	99	19	0	155
2.. Broken Hill Musicians Club Ltd	247	229	18	0	101
2.. Diggers The Entrance	119	102	17	0	197
2.. St Marys District Band Club Limit..	131	115	16	0	189
2.. Birrong Bowling & Sports Club Ltd	168	153	15	0	127
2.. Wests City	175	160	15	0	135
2.. Cessnock Rugby League Support..	153	138	15	8	119
2.. Bateau Bay Bowling Club	197	183	14	1	126
2.. Shoalhaven Ex-Servicemen's Clu..	150	137	13	0	105
2.. City of Sydney RSL & Community..	143	131	12	0	132
2.. Casino Returned Servicemens M..	173	161	12	0	103
2.. The Entrance Leagues Club Limit..	121	109	12	0	146
2.. Barrier Social Democratic Club Li..	161	150	11	29	133
2.. Beresfield Bowling Club Limited	166	155	11	0	125
2.. Building Workers Club Limited	160	151	9	0	138
2.. Canterbury Hurlstone Park RSL C..	24	16	8	0	374
2.. Cronulla-Sutherland Leagues Clu..	114	106	8	0	165
2.. Camden Valley Country Club	120	112	8	18	202
2.. Illawarra Master Builders Club Li..	112	104	8	0	208
2.. City of Blacktown RSL Club Ltd	86	79	7	0	208
2.. Bathurst RSL Club Limited	105	98	7	0	137
2.. Oak Flats Bowling & Recreation ..	155	148	7	0	130
2.. Bathurst Panthers	158	152	6	0	123
2.. Avoca Beach Bowling & Recreat..	219	213	6	1	101
2.. West Tamworth League Club Limi..	89	83	6	0	161
2.. St Marys Rugby League Club Ltd	23	18	5	0	437
2.. St George Masonic Club Limited	179	174	5	0	104
2.. Sawtell RSL Club Limited	164	159	5	0	115
2.. Goulburn & District Soldiers Club..	139	134	5	0	135
2.. South Tweed Heads Bowls Club ..	194	189	5	0	131
2.. Tweed Heads Bowls Club Ltd	69	64	5	0	250
2.. Belmont 16 Foot Sailing Club	71	66	5	(13)	271
2.. Toronto District Workers Club Li..	110	105	5	0	158
2.. Orange Ex-Services Club	60	55	5	3	211
	Nov16 Net Ranking	Aug16 Net Ranking	Change in Net Ranking Nov16 vs Aug16	Change in Gaming Machines Nov16 vs Au..	Nov16 Gaming Machines

6.2(d) Largest Current Quarter Net Ranking Declines – Clubs with 50 to 100 GMs

P.. Name	Nov16 Net Ranking	Aug16 Net Ranking	Change in Net Ranking Nov16 vs Aug16	Change in Gaming Machines Nov16 vs Au..	Nov16 Gaming Machines
2.. Cessnock Ex-Services Club Limit..	462	407	55	0	69
2.. Jets Sports Club Limited	492	438	54	0	53
2.. Muswellbrook & District Workers ..	237	191	46	0	61
2.. Bomaderry RSL Club Ltd	563	520	43	0	54
2.. Dural Country Club	435	401	34	0	64
2.. Narrabri RSL Memorial & Citizens..	321	290	31	0	66
2.. Lightning Ridge District Bowling ..	231	200	31	0	91
2.. Woodburn Evans Head RSL Club ..	366	337	29	0	56
2.. Narrandera Ex Servicemen's Club..	378	349	29	0	54
2.. Cowra Bowling Club Limited	347	319	28	0	50
2.. Maitland District Leagues Club	355	327	28	0	76
2.. Mortdale RSL Community Club Li..	398	371	27	0	58
2.. Kahibah Bowling Club Co-operati..	389	362	27	0	50
2.. Singleton Returned Servicemen's..	249	223	26	0	80
2.. Sydney Markets Industries Club L..	211	186	25	0	61
2.. Park Beach Bowling Club Limited	263	238	25	0	65
2.. Wauchope RSL Club Ltd	255	230	25	0	83
2.. Illawarra Leagues Club Ltd	310	285	25	0	91
2.. Shoalhaven Heads Bowling & Re..	286	261	25	0	72
2.. Wyong RSL Club	325	301	24	0	63
2.. Figtree RSL Bowling Club	363	340	23	0	60
2.. Georges River 16Ft Sailing Club ..	458	436	22	0	52
2.. Munmorah United Bowling Club L..	282	260	22	0	65
2.. Byron Bay Services Club	264	242	22	0	60
2.. Pearl Club Chatswood	327	306	21	0	87
2.. Emu Plains Sporting & Recreatio..	349	328	21	0	50
2.. Matraville R S L Sub-branch Club ..	245	225	20	0	95
2.. Ourimbah-Lisarow RSL Club Ltd	307	287	20	0	77
2.. The Entrance Bowling Club Ltd	288	268	20	0	76
2.. Windang Bowls Club	306	286	20	0	55
2.. Charlestown Bowling Club	262	243	19	0	84
2.. Kareela Golf & Social Club	384	366	18	0	80
2.. Parkes Service & Citizens Club C..	227	209	18	0	73
2.. Glenbrook Panthers	338	320	18	0	53
2.. Cyprus Community of NSW Limit..	683	667	16	0	60
2.. The Juniors Malabar	451	435	16	0	60
2.. Club Willoughby	539	523	16	0	52
2.. West Diggers	256	240	16	0	58
2.. Henry Lawson Club	326	310	16	0	52
2.. Club Dubbo	269	254	15	0	71
2.. Cowra Services Club	350	336	14	1	58
2.. Inverell Returned Servicemen's C..	206	193	13	0	62
2.. Corrimall Leagues Club	371	358	13	0	70
2.. Penrith Gaels Cultural & Sporting..	328	315	13	0	54
2.. Oatley RSL & Community Club Li..	427	415	12	0	54
2.. Umina Beach Bowling Club	258	246	12	0	73
2.. Leeton Soldiers Club Ltd	292	280	12	0	65
2.. Pelican Flat RSL Sub-branch Clu..	317	305	12	0	69
2.. Picton Bowling Club	342	330	12	0	50
2.. Lemon Tree Passage Bowling Clu..	271	259	12	0	79
2.. Woy Woy Leagues Club	302	291	11	0	72
2.. Queanbeyan Australian Football ..	294	283	11	0	67
2.. Avalon Beach RSL Club Ltd	304	293	11	0	75
2.. Kurri Kurri Bowling Club	217	206	11	0	80
2.. Cardiff RSL Club Limited	216	205	11	0	98
2.. Mosman Returned Servicemens ..	251	241	10	0	66
2.. Greta Workers Sports & Recreati..	406	396	10	0	50
2.. Windale Gateshead Bowling Club	387	377	10	0	65

7. November 2016 Quarter - Club Machine Movements

7.1 November 2016 Quarter Largest Machine Number Increases

P.. Name	Change in Gaming Machines Nov16 vs Aug16	Nov16 Gaming Machines	Nov16 PGM Ranking	Nov16 Net Ranking
2.. Liverpool Catholic Club	34	435	18	12
2.. Barrier Social Democratic Cl..	29	133	243	161
2.. Greenacre Bowling & Recre..	20	46	873	638
2.. Guildford Bowling Club	20	73	630	393
2.. Camden Valley Country Club	18	202	279	120
2.. Club Central Menai	16	218	192	85
3.. lakeside Golf Club - Camden	14	51	826	588
2.. Gynea Bowling & Recreatio..	13	51	699	515
2.. Western Suburbs Soccer, S..	12	235	73	57
2.. DOOLEYS Regents Park Sp..	10	64	450	337
2.. Western Suburbs (N'cle) Le..	9	556	42	13
2.. Campbelltown RSL Club Li..	8	208	276	113
2.. East Maitland Bowling Club ..	8	164	126	99
2.. Cessnock Rugby League Su..	8	119	166	153
2.. South Sydney Junior Rugby..	7	476	26	14
2.. Manilla RSL & Ex-Serviceme..	7	26	546	569
2.. West Nelson Bay	7	180	115	90
2.. Grandviews Bowling & Recr..	6	36	573	519
2.. Parramatta Leagues Club	6	520	17	8
2.. CLUB RIVERS	6	208	24	47
2.. Bexley RSL & Community C..	5	100	286	207
2.. Maroubra Seals Sports & Co..	5	164	134	106
2.. Ramsgate RSL Memorial Cl..	5	189	58	68
	Change in Gaming Machines Nov16 vs Aug16	Nov16 Gaming Machines	Nov16 PGM Ranking	Nov16 Net Ranking

7.2 November 2016 Quarter Largest Machine Number Reductions

P.. Name	Change in Gaming Machines Nov16 vs Aug16	Nov16 Gaming Machines	Nov16 PGM Ranking	Nov16 Net Ranking
2.. Western Suburbs Leagues ..	(24)	257	67	51
2.. Uruguayan Social & Sportin..	(22)	0	1,118	1,052
2.. St Marys R.S.L. & Ex Service..	(20)	130	478	228
2.. Belmont 16 Foot Sailing Club	(13)	271	197	71
2.. Wakehurst Golf Club Limited	(10)	0	1,115	981
2.. Corowa RSL Club Limited	(7)	205	301	124
2.. Richmond Club Ltd	(7)	141	90	103
2.. Beverley Park Golf Club Ltd	(6)	14	705	739
2.. City Tattersalls Club	(6)	285	63	43
2.. Kyeemagh RSL & Communi..	(6)	6	517	806
2.. Albury Soldiers Sailors & Ai..	(6)	318	127	50
2.. Maitland Park Bowling & Sp..	(6)	14	665	717
2.. Canterbury League Club Ltd	(4)	691	14	4
2.. Lismore & District Workers ..	(4)	146	96	102
2.. Bexley Golf Club	(3)	10	496	705
2.. North Bondi RSL Club Ltd	(3)	15	679	712
2.. Western Suburbs Leagues ..	(3)	474	43	22
2.. Broadwater Bowling Club	(3)	4	1,027	1,066
2.. Club Bega	(3)	47	434	397
2.. The Bundanoon Club Limited	(3)	9	922	936
2.. Condobolin Sports Club Li..	(3)	12	650	737
2.. Merimbula-Imlay Bowling Cl..	(3)	121	135	142
2.. Croatian Wickham Sports Cl..	(3)	7	803	884
2.. Muree Golf Club Limited	(3)	41	615	511
2.. Coraki Golf Club Ltd	(3)	9	1,034	1,031
2.. Greek Com. Club	(3)	18	878	798
2.. Coffs Harbour Rugby Leagu..	(3)	7	1,085	1,081
	Change in Gaming Machines Nov16 vs Aug16	Nov16 Gaming Machines	Nov16 PGM Ranking	Nov16 Net Ranking

8. Important Information for Report Users

Confidentiality and Copyright

This document is confidential and for the use of PKF personnel, clients and potential clients. The contents of this report are subject to copyright and the report is not to be distributed, forwarded, copied or duplicated in any form or manner. A Creative Commons Attributions licence applies to Liquor & Gaming NSW data. © State of NSW (Department of Justice) 2016. Data for QLD is obtained under a Creative Commons Licence © The State of Queensland 2016. Data for VIC is obtained under a Creative Commons Licence © The State of Victoria 2016.

Disclaimer and Reliance

The contents of this document are based on the NSW Clubs State Gaming Rankings data up to and including the quarter ended 30 November 2016. This report has been prepared using the data provided by Liquor & Gaming NSW, the Queensland Office of Liquor, Gaming and Racing and the Victorian Commission for Gaming and Liquor Regulation. Any reliance on the contents of the report is at the relevant party's own risk. Whilst all efforts have been made to ensure the accuracy and validity of the report contents, PKF does not warrant or otherwise provide any guarantee that the report is free from error or inaccuracy. PKF disclaims any assumption of responsibility for the report contents or interpretations thereof. PKF is not responsible for the completeness, validity or accuracy of the underlying data prepared by the relevant state governments.